

Cyclin G1 Rabbit pAb

货号: **AYP17097**

产品信息

反应	Human,Mouse,Rat
宿主	Rabbit
克隆性	Polyclonal
预测反应	
应用	WB IHC
推荐浓度	WB: 1:500 - 1:1000 IHC: 1:50 - 1:200
理论分子量	18kDa/34kDa
实测分子量	34KDa
形式	Liquid
保存条件	Store at -20°C. Avoid freeze / thaw cycles. Buffer: PBS with 0.02% sodium azide,50% glycerol,pH7.3.
偶联物	Unconjugated
阳性对照	HT-29,Mouse skeletal muscle,Rat skeletal muscle
细胞定位	Nucleus
纯化	Affinity purification

抗原信息

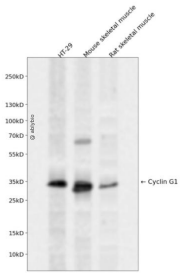
抗原信息	A synthetic peptide corresponding to a sequence within amino acids 200 to the C-terminus of human Cyclin G1 (NP_004051.1).
序列	PSVLALSIIALEIQAQKCVLTEGIECLQKHSKINGRDLTFWQELVSKCLTEYSSNKCSKPNVQKWKWIVSGRTARQLKHSYYRITHLPTIPEMVP

靶点信息

研究背景	The eukaryotic cell cycle is governed by cyclin-dependent protein kinases (CDKs) whose activities are regulated by cyclins and CDK inhibitors. The protein encoded by this gene is a member of the cyclin family and contains the cyclin box. The encoded protein lacks the protein destabilizing (PEST) sequence that is present in other family members. Transcriptional activation of this gene can be induced by tumor protein p53. Two transcript variants encoding the same protein have been identified for this gene.
------	---

基因ID	900
基因名	CCNG1
Swiss	P51959
别名	CCNG1;CCNG;cyclin-G1

产品验证



Western blot analysis of Cyclin G1 expressed in HT-29, Mouse skeletal muscle, Rat skeletal muscle using Cyclin G1 Rabbit pAb at 1:1000. Secondary antibody: HRP Goat Anti-Rabbit IgG (H+L) at 1:5000. Lysate s/proteins: 30ug per lane. Blocking buffer: 5% non-fat dry milk in TBST. Detection: ECL Enhanced Kit. Exposure time: 120s.

实验步骤

访问官网浏览详情: www.ablybio.cn