

# KLKB1 Rabbit pAb

货号: **AYP17091**

## 产品信息

反应	Human,Mouse,Rat
宿主	Rabbit
克隆性	Polyclonal
预测反应	
应用	WB IHC
推荐浓度	<b>WB:</b> 1:500 - 1:1000 <b>IHC:</b> 1:50 - 1:200
理论分子量	71kDa
实测分子量	80KDa
形式	Liquid
保存条件	Store at -20°C. Avoid freeze / thaw cycles. Buffer: PBS with 0.01% thiomersal,50% glycerol,pH7.3.
偶联物	Unconjugated
阳性对照	Mouse plasma
细胞定位	Secreted
纯化	Affinity purification

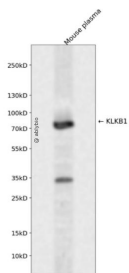
## 抗原信息

抗原信息	Recombinant fusion protein containing a sequence corresponding to amino acids 20-300 of human KLKB1 (NP_000883.2).
序列	GCLTQLYENAFFRGGDVASMYTPNAQYCQMRCTFHPRCLLFSFLPASSINDMEKRFGCFLKDSVTGTLPKVHRTGAVSG HSLKQCGHQISACHRDIYKGVDMRGVNFNVSKVSSVEECQKRCTSNIRCQFFSYATQTFHKAEYRNNCLLKYSPPGGTPTAI KVLSNVESGFSLKPCALSEIGCHMNIFQHAFSDVDVARVLTDAFVCRTICTYHPNCLFFTFYTNVWKIESQRNVCLLKTSE SGTPSSSTPQENTISGYSLLTCKRTLPEPCHSKIYPGV

## 靶点信息

研究背景	This gene encodes a glycoprotein that participates in the surface-dependent activation of blood coagulation, fibrinolysis, kinin generation and inflammation. The encoded preproprotein present in plasma as a non-covalent complex with high molecular weight kininogen undergoes proteolytic processing mediated by activated coagulation factor XII to generate a disulfide-linked, heterodimeric serine protease comprised of heavy and light chains. Certain mutations in this gene cause prekallikrein deficiency. Alternative splicing results in multiple transcript variants encoding different isoforms.
基因ID	3818
基因名	KLKB1
Swiss	P03952
别名	KLKB1;KLK3;PKK;PKKD;PPK

## 产品验证



Western blot analysis of KLKB1 expressed in Mouse plasma using KLKB1 Rabbit pAb at 1:1000. Secondary antibody: HRP Goat Anti-Rabbit IgG (H+L) at 1:5000. Lysates/proteins: 30ug per lane. Blocking buffer: 5% non-fat dry milk in TBST. Detection: ECL Enhanced Kit. Exposure time: 120s.

## 实验步骤

访问官网浏览详情: [www.ablybio.cn](http://www.ablybio.cn)