

# SGCE Rabbit pAb

货号: **AYP17088**

## 产品信息

反应	Human,Mouse
宿主	Rabbit
克隆性	Polyclonal
预测反应	
应用	WB
推荐浓度	<b>WB:</b> 1:500 - 1:2000
理论分子量	49kDa/51kDa/52kDa
实测分子量	55kDa
形式	Liquid
保存条件	Store at -20°C. Avoid freeze / thaw cycles. Buffer: PBS with 0.02% sodium azide,50% glycerol,pH7.3.
偶联物	Unconjugated
阳性对照	SW620,A-549
细胞定位	Cell membrane,Cell projection,Cytoplasm,Golgi apparatus,Single-pass membrane protein,cytoskeleton,desmosome,sarcolemma
纯化	Affinity purification

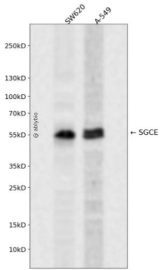
## 抗原信息

抗原信息	Recombinant fusion protein containing a sequence corresponding to amino acids 1-317 of human SGCE (NP_003910.1).
序列	MQLPRWWELGDPCAWTGQGRGTRRMSPATTGTFLLTVYSIFSKVHSDRNVYPSAGVLFVHVLEREYFKGEFPPYPKPGEI SNDPITFNTNLMGYDPDRPGWLRYYQRTPYSDGVLYGSPTAENVGKPTIIEITAYNRRTFETARHNLIIINIMSAEDFPLPYQAEF FIKNMNVVEMLASEVLGDFLGAVKNVWQPERLNAINITSALDRGGRVPLPINDLKEGVYVMVGADVPFSSCLREVENPQN QLRCSQEMEPVITCDKKFRTQFYIDWCKISLVDKTKQVSTYQEVIRGEGILPDGGGEYKPPSDSLKSRDYITDF

## 靶点信息

研究背景	This gene encodes the epsilon member of the sarcoglycan family. Sarcoglycans are transmembrane proteins that are components of the dystrophin-glycoprotein complex, which link the actin cytoskeleton to the extracellular matrix. Unlike other family members which are predominantly expressed in striated muscle, the epsilon sarcoglycan is more broadly expressed. Mutations in this gene are associated with myoclonus-dystonia syndrome. This gene is imprinted, with preferential expression from the paternal allele. Alternatively spliced transcript variants encoding different isoforms have been found for this gene. A pseudogene associated with this gene is located on chromosome 2.
基因ID	8910
基因名	SGCE
Swiss	O43556
别名	SGCE;DYT11;ESG;epsilon-SG

## 产品验证



Western blot analysis of SGCE expressed in SW620,A-549 using SGCE Rabbit pAb at 1:1000. Secondary antibody: HRP Goat Anti-Rabbit IgG (H+L) at 1:5000. Lysates/proteins: 30ug per lane. Blocking buffer: 5% non-fat dry milk in TBST. Detection: ECL Enhanced Kit. Exposure time: 120s.

## 实验步骤

访问官网浏览详情: [www.ablybio.cn](http://www.ablybio.cn)