

# GTF2A1 Rabbit pAb

货号: **AYP17086**

## 产品信息

反应	Human
宿主	Rabbit
克隆性	Polyclonal
预测反应	
应用	WB
推荐浓度	<b>WB:</b> 1:500 - 1:2000
理论分子量	37kDa/41kDa
实测分子量	37kDa
形式	Liquid
保存条件	Store at -20°C. Avoid freeze / thaw cycles. Buffer: PBS with 0.02% sodium azide,50% glycerol,pH7.3.
偶联物	Unconjugated
阳性对照	BT-474,Raji
细胞定位	Nucleus
纯化	Affinity purification

## 抗原信息

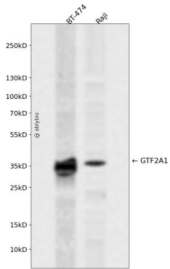
抗原信息	Recombinant fusion protein containing a sequence corresponding to amino acids 1-270 of human GTF2A1 (NP_056943.1).
序列	MANSANTNTVPKLYRSVIEDVINDVRDIFLDDGVDEQVLMELKTLWENKLMQSRAVDGFHSEEQQLLLQVQQQHQPQQ QQHHHHHHHQAQPQQTVPQQAQTQQVLIPASQQATAPQVIVPDSKLIQHMNASNMSAAATAATLALPAGVTPVQQILT NSGQLLQVVRAANGAQYIFQPQSSVVLQQQVIPQMMPGGVQAPVIQQVLAPLPGGISPQTGVIIQPQQILFTGNKTQVIPT TVAAPTPAQAITATGQQQPQAQPAQTQAPLV

## 靶点信息

研究背景	
基因ID	2957
基因名	GTF2A1

Swiss	P52655
别名	GTF2A1;TF2A1;TFIIA;TFIIA-42;TFIIAL

## 产品验证



Western blot analysis of GTF2A1 expressed in BT-474,Raji using GTF2A1 Rabbit pAb at 1:1000. Secondary antibody: HRP Goat Anti-Rabbit IgG (H+L) at 1:5000. Lysates/proteins: 30ug per lane. Blocking buffer: 5% non-fat dry milk in TBST. Detection: ECL Enhanced Kit. Exposure time: 120s.

## 实验步骤

访问官网浏览详情: [www.ablybio.cn](http://www.ablybio.cn)