

IL-1RAcP Rabbit pAb

货号: **AYP17083**

产品信息

| | |
|-------|--|
| 反应 | Human,Mouse,Rat |
| 宿主 | Rabbit |
| 克隆性 | Polyclonal |
| 预测反应 | |
| 应用 | WB IHC |
| 推荐浓度 | WB: 1:500 - 1:1000 IHC: 1:50 - 1:200 |
| 理论分子量 | 39kDa/41kDa/65kDa/78kDa |
| 实测分子量 | 73KDa |
| 形式 | Liquid |
| 保存条件 | Store at -20°C. Avoid freeze / thaw cycles. Buffer: PBS with 0.01% thiomersal,50% glycerol,pH7.3. |
| 偶联物 | Unconjugated |
| 阳性对照 | SH-SY5Y,Mouse liver,Rat liver |
| 细胞定位 | Cell membrane,Secreted,Single-pass type I membrane protein |
| 纯化 | Affinity purification |

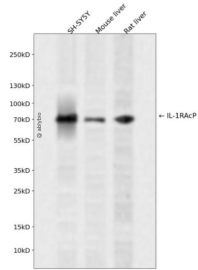
抗原信息

| | |
|------|--|
| 抗原信息 | Recombinant fusion protein containing a sequence corresponding to amino acids 21-356 of human IL-1RAcP (NP_001161402.1). |
| 序列 | SERCDDWGLDTMRQIQVFEDEPARIKCPLFEHFLKFNYSSTAHSAGLTLIWYWTRQDRDLEEPINFRLPENRISKEKDVLFWRPTLLNDTGNYTCMLRNNTTYCSKVAFPLEVVQKDSFCNSPMKLPVHKLIEYGIQRITCPNVDGYFPSSVKPTITWYMGCYKIQNFNNVIPEGMNLFLIALISNNGNYTCVVYPENGRTFHLTRTLTVKVVGSPKNAVPPVIHSPNDHVVYEKEPGEELLIPCTVYFSFLMDSRNEVWWTIDGKKPDDITIDVTINESISHSRTEDETRTQILSIKKVTSEDLKRSYVCHARSAKGEVAKAAKVQKGNRCGQ |

靶点信息

| | |
|-------|--|
| 研究背景 | Interleukin 1 induces synthesis of acute phase and proinflammatory proteins during infection, tissue damage, or stress, by forming a complex at the cell membrane with an interleukin 1 receptor and an accessory protein. This gene encodes the interleukin 1 receptor accessory protein. The protein is a necessary part of the interleukin 1 receptor complex which initiates signalling events that result in the activation of interleukin 1-responsive genes. Alternative splicing of this gene results in two transcript variants encoding two different isoforms, one membrane-bound and one soluble. The ratio of soluble to membrane-bound forms increases during acute-phase induction or stress. |
| 基因ID | 3556 |
| 基因名 | IL1RAP |
| Swiss | Q9NPH3 |
| 别名 | IL1RAP;C3orf13;IL-1RAcP;IL1R3 |

产品验证



Western blot analysis of IL-1RAcP expressed in SH-SY5Y, Mouse liver, Rat liver using IL-1RAcP Rabbit pAb at 1:1000. Secondary antibody: HRP Goat Anti-Rabbit IgG (H+L) at 1:5000. Lysates/proteins: 30ug per lane. Blocking buffer: 5% non-fat dry milk in TBST. Detection: ECL Enhanced Kit. Exposure time: 120 S.

实验步骤

访问官网浏览详情: www.ablybio.cn