

PSMD7 Rabbit pAb

货号: **AYP17079**

产品信息

反应	Human,Mouse
宿主	Rabbit
克隆性	Polyclonal
预测反应	
应用	WB IHC IF/ICC
推荐浓度	WB: 1:500 - 1:2000 IHC: 1:50 - 1:200 IF/ICC: 1:50 - 1:200
理论分子量	37kDa
实测分子量	37kDa
形式	Liquid
保存条件	Store at -20°C. Avoid freeze / thaw cycles. Buffer: PBS with 0.02% sodium azide,50% glycerol,pH7.3.
偶联物	Unconjugated
阳性对照	MCF7,SW620,A-549,K-562,BT-474,Mouse skeletal muscle,Mouse heart,Mouse testis
细胞定位	cytosol,extracellular exosome,extracellular region,nucleoplasm,nucleus
纯化	Affinity purification

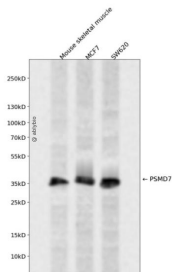
抗原信息

抗原信息	Recombinant fusion protein containing a sequence corresponding to amino acids 1-324 of human PSMD7 (NP_002802.2).
序列	MPELAVQKVVVHPLVLLSVVDHFNIRIGKVGNGKRVVGVLLGSWQKKVLDVSNFSAVPFDEDDKDDSVWFLDHDYLEN MYGMFKKVNARERIVGWYHTGPKLHKNDIAINELMKRYCPNSVLVIIDVKPKDLGLPTEAYISVEEVHDDGTPTSKTFEHVT SEIGAEAEVEVGVEHLLRDIKDTTGTLSQRITNQVHGLKGLNSKLLDIRSYLEKVATGKLPINHQIYQLQDVFNLLPDVSLQ EFVKAFYLLKTNDQMVVVYLASLIRSVVALHNLINNKIANRDAEKKEGQEKEESKKDRKEDKEKDKKEKSDVKKEEKKEK

靶点信息

研究背景	The 26S proteasome is a multicatalytic proteinase complex with a highly ordered structure composed of 2 complexes, a 20S core and a 19S regulator. The 20S core is composed of 4 rings of 28 non-identical subunits; 2 rings are composed of 7 alpha subunits and 2 rings are composed of 7 beta subunits. The 19S regulator is composed of a base, which contains 6 ATPase subunits and 2 non-ATPase subunits, and a lid, which contains up to 10 non-ATPase subunits. Proteasomes are distributed throughout eukaryotic cells at a high concentration and cleave peptides in an ATP/ubiquitin-dependent process in a non-lysosomal pathway. An essential function of a modified proteasome, the immunoproteasome, is the processing of class I MHC peptides. This gene encodes a non-ATPase subunit of the 19S regulator. A pseudogene has been identified on chromosome 17.
基因ID	5713
基因名	PSMD7
Swiss	P51665
别名	PSMD7;MOV34;P40;Rpn8;S12

产品验证



Western blot analysis of PSMD7 expressed in Mouse skeletal muscle, MCF7, SW620 using PSMD7 Rabbit p Ab at 1:1000. Secondary antibody: HRP Goat Anti-Rabbit IgG (H+L) at 1:5000. Lysates/proteins: 30ug per lane. Blocking buffer: 5% non-fat dry milk in TBST. Detection: ECL Enhanced Kit. Exposure time: 120s.

实验步骤

访问官网浏览详情: www.ablybio.cn