

# Alpha2-adaptin/AP2A2 Rabbit pAb

货号: **AYP17060**

## 产品信息

反应	Human,Mouse,Rat
宿主	Rabbit
克隆性	Polyclonal
预测反应	
应用	WB IF/ICC
推荐浓度	<b>WB:</b> 1:500 - 1:1000 <b>IF/ICC:</b> 1:50 - 1:200
理论分子量	73kDa/103kDa/104kDa
实测分子量	104KDa
形式	Liquid
保存条件	Store at -20°C. Avoid freeze / thaw cycles. Buffer: PBS with 0.05% proclin300,50% glycerol,pH7.3.
偶联物	Unconjugated
阳性对照	SH-SY5Y,Mouse liver,Rat liver
细胞定位	Cell membrane,Cytoplasmic side,Membrane,Peripheral membrane protein,coated pit
纯化	Affinity purification

## 抗原信息

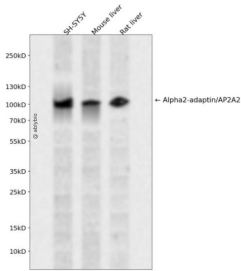
抗原信息	Recombinant fusion protein containing a sequence corresponding to amino acids 590-939 of human Alpha2-adaptin/AP2A2 (NP_036437.1).
序列	STDILATVLEEMPPFERESSILAKLKKKGPSTVTDLEDTKRDRSVDVNGGPEPAPASTSAVSTPSPSADLLGLGAAPPAPAGPPPSSGGSGLLVDVFSDSASVVAPLPGSEDNFARFVCKNNGVLFENQLLQIGLKSEFRQNLGRMFIFYGNKTSTQFLNFTPTLICSDDLQPNLNLQTKPVDPTVEGGAQVQVWNIECVSDFTEAPVLNIQFRYGGTFQNVSVQLPITLNKFFQPTEMASQDFQQRWKQLSNPQQEVQNIKAKHPMDTEVTKAKIIGFGSALLEEVDPNPANFVAGAGIHTKTTQIGCLLRLEPNLQAQMYRLTLRTSKEAVSQRLCELLSAQF

## 靶点信息

研究背景	The protein encoded by this gene is a subunit of the AP-2 adaptor protein complex, which is involved in linking lipid and protein membrane components with the clathrin lattice. This interaction supports the formation of clathrin-coated vesicles, and the encoded subunit aids in the process by binding polyphosphoinositide-containing lipids in the cell membrane.
------	---

基因ID	161
基因名	AP2A2
Swiss	O94973
别名	AP2A2;ADTAB;CLAPA2;HIP-9;HIP9;HYPJ

## 产品验证



Western blot analysis of Alpha2-adaptin/AP2A2 expressed in SH-SY5Y, Mouse liver, Rat liver using Alpha2-adaptin/AP2A2 Rabbit pAb at 1:1000. Secondary antibody: HRP Goat Anti-Rabbit IgG (H+L) at 1:5000. Lysates/proteins: 30ug per lane. Blocking buffer: 5% non-fat dry milk in TBST. Detection: ECL Enhanced Kit. Exposure time: 120s.

## 实验步骤

访问官网浏览详情: [www.ablybio.cn](http://www.ablybio.cn)