

# CUL4B Rabbit pAb

货号: **AYP17056**

## 产品信息

反应	Human,Mouse,Rat
宿主	Rabbit
克隆性	Polyclonal
预测反应	
应用	WB IHC IF/ICC
推荐浓度	<b>WB:</b> 1:500 - 1:2000 <b>IHC:</b> 1:50 - 1:200 <b>IF/ICC:</b> 1:50 - 1:200
理论分子量	84kDa/102kDa/103kDa
实测分子量	115kDa
形式	Liquid
保存条件	Store at -20°C. Avoid freeze / thaw cycles. Buffer: PBS with 0.02% sodium azide,50% glycerol,pH7.3.
偶联物	Unconjugated
阳性对照	Mouse liver,Mouse kidney
细胞定位	Nucleus
纯化	Affinity purification

## 抗原信息

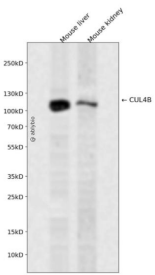
抗原信息	Recombinant fusion protein containing a sequence corresponding to amino acids 1-200 of human CUL4B (NP_003579.3).
序列	MMSQSSGSGDGNDEATTSKDGGFSSPSPSAAAAAQEVRSATDGNTSTTPPTSAKKRKLNSSSSSSNSSNEREDFDS TSSSSSTPPLQPRDSASPSTSSFLGVSAASSHVPIQKKLRFEDTLEFVGFDAKMAEESSSSSSSSPTAATSQQQQLKN KSILISSVASVHHANGLAKSSTTVSSFANSKPGSAKKLVK

## 靶点信息

研究背景	This gene is a member of the cullin family. The encoded protein forms a complex that functions as an E3 ubiquitin ligase and catalyzes the polyubiquitination of specific protein substrates in the cell. The protein interacts with a ring finger protein, and is required for the proteolysis of several regulators of DNA replication including chromatin licensing and DNA replication factor 1 and cyclin E. Multiple transcript variants encoding different isoforms have been found for this gene.
------	---

基因ID	8450
基因名	CUL4B
Swiss	Q13620
别名	CUL4B;CUL-4B;MRXHF2;MRXS15;MRXSC;SFM2;cullin-4B

### 产品验证



Western blot analysis of CUL4B expressed in Mouse liver, Mouse kidney using CUL4B Rabbit pAb at 1:1000 . Secondary antibody: HRP Goat Anti-Rabbit IgG (H+L) at 1:5000. Lysates/proteins: 30ug per lane. Blocking buffer: 5% non-fat dry milk in TBST. Detection: ECL Enhanced Kit. Exposure time: 120s.

### 实验步骤

访问官网浏览详情: [www.ablybio.cn](http://www.ablybio.cn)