

LIMK2 Rabbit pAb

货号: AYP17050

产品信息

反应	Human,Mouse
宿主	Rabbit
克隆性	Polyclonal
预测反应	
应用	WB IF/ICC
推荐浓度	WB: 1:500 - 1:2000 IF/ICC: 1:50 - 1:200
理论分子量	69kDa/72kDa/77kDa
实测分子量	80kDa
形式	Liquid
保存条件	Store at -20°C. Avoid freeze / thaw cycles. Buffer: PBS with 0.02% sodium azide,50% glycerol,pH7.3.
偶联物	Unconjugated
阳性对照	HepG2,HeLa,Mouse pancreas
细胞定位	Cytoplasm,Nucleus,Nucleus
纯化	Affinity purification

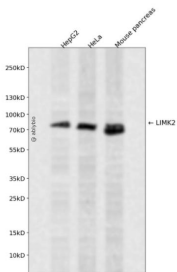
抗原信息

抗原信息	Recombinant fusion protein containing a sequence corresponding to amino acids 1-240 of human LIMK2 (NP_001026971.1).
序列	MGSYLSVPAYFTSRDLFRCSQCDSLTNWYYEKDGKLYCPKDYWGKFGFCHGCSLLMTGPFMVAGEFKYHPECFACM SCKVIIEDGDAYALVQHATLYCGKCHNEVVLAPMFERLSTESVQEQLPYSVTLISMPATTEGRRGFSVSVESACSNYATTVQ VKEVNRMHISPNNRNAIHPGDRILEINGTPVRTL RVEEVEDAISQTSQTLQLLIEHDPVSQRDLQRLLEARLAPHMQNAG

靶点信息

研究背景	There are approximately 40 known eukaryotic LIM proteins, so named for the LIM domains they contain. LIM domains are highly conserved cysteine-rich structures containing 2 zinc fingers. Although zinc fingers usually function by binding to DNA or RNA, the LIM motif probably mediates protein-protein interactions. LIM kinase-1 and LIM kinase-2 belong to a small subfamily with a unique combination of 2 N-terminal LIM motifs and a C-terminal protein kinase domain. The protein encoded by this gene is phosphorylated and activated by ROCK, a downstream effector of Rho, and the encoded protein, in turn, phosphorylates cofilin, inhibiting its actin-depolymerizing activity. It is thought that this pathway contributes to Rho-induced reorganization of the actin cytoskeleton. At least three transcript variants encoding different isoforms have been found for this gene.
基因ID	3985
基因名	LIMK2
Swiss	P53671
别名	LIMK2

产品验证



Western blot analysis of LIMK2 expressed in HepG2, HeLa, Mouse pancreas using LIMK2 Rabbit pAb at 1:1000. Secondary antibody: HRP Goat Anti-Rabbit IgG (H+L) at 1:5000. Lysates/proteins: 30ug per lane. Blocking buffer: 5% non-fat dry milk in TBST. Detection: ECL Enhanced Kit. Exposure time: 120s.

实验步骤

访问官网浏览详情: www.ablybio.cn