

PEPD Rabbit pAb

货号: **AYP17044**

产品信息

反应	Human,Mouse,Rat
宿主	Rabbit
克隆性	Polyclonal
预测反应	
应用	WB
推荐浓度	WB: 1:500 - 1:2000
理论分子量	47kDa/49kDa/54kDa
实测分子量	54kDa
形式	Liquid
保存条件	Store at -20°C. Avoid freeze / thaw cycles. Buffer: PBS with 0.01% thiomersal,50% glycerol,pH7.3.
偶联物	Unconjugated
阳性对照	293T,HT-29,BT-474,Mouse kidney,Mouse liver,Rat kidney
细胞定位	extracellular exosome
纯化	Affinity purification

抗原信息

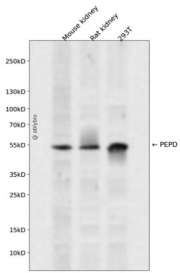
抗原信息	Recombinant fusion protein containing a sequence corresponding to amino acids 288-424 of human PEPD (NP_000276.2).
序列	ITCSFPANGKFTADQKAVYEAVLRSSRAVMGAMKPGVWWPDMHRLADRIHLEELAHEMGLSGSVDAMVQAHLGAVFMP HGLGHFLGIDVHVDVGGYPEGVERIDEPGLRSLRTARHLQPGMVLTVEPGIYFIDHLLDE

靶点信息

研究背景	This gene encodes a member of the peptidase family. The protein forms a homodimer that hydrolyzes dipptides or tripeptides with C-terminal proline or hydroxyproline residues. The enzyme serves an important role in the recycling of proline, and may be rate limiting for the production of collagen. Mutations in this gene result in proline deficiency, which is characterized by the excretion of large amount of di- and tripeptides containing proline. Multiple transcript variants encoding different isoforms have been found for this gene.
------	--

基因ID	5184
基因名	PEPD
Swiss	P12955
别名	PEPD;PROLIDASE

产品验证



Western blot analysis of PEPD expressed in Mouse kidney,Rat kidney,293T using PEPD Rabbit pAb at 1:1 000. Secondary antibody: HRP Goat Anti-Rabbit IgG (H+L) at 1:5000. Lysates/proteins: 30ug per lane. Bl ocking buffer: 5% non-fat dry milk in TBST. Detection: ECL Enhanced Kit. Exposure time: 120s.

实验步骤

访问官网浏览详情: www.ablybio.cn