

CPE Rabbit pAb

货号: **AYP17030**

产品信息

反应	Human,Mouse
宿主	Rabbit
克隆性	Polyclonal
预测反应	
应用	WB
推荐浓度	WB: 1:500 - 1:2000
理论分子量	49kDa/53kDa
实测分子量	53-55kDa
形式	Liquid
保存条件	Store at -20°C. Avoid freeze / thaw cycles. Buffer: PBS with 0.02% sodium azide,50% glycerol,pH7.3.
偶联物	Unconjugated
阳性对照	A-549,MCF7,Mouse brain,Mouse kidney
细胞定位	Cytoplasmic vesicle,Nucleus,Peripheral membrane protein,Secreted,secretory vesicle membrane
纯化	Affinity purification

抗原信息

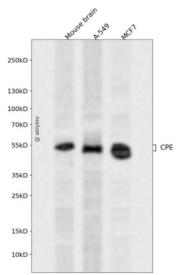
抗原信息	Recombinant fusion protein containing a sequence corresponding to amino acids 257-476 of human CPE (NP_001864.1).
序列	PYDETRSGSAHEYSSSPDDAIFQSLARAYSSFNPMASDPNRPPCRKNDDSSFVDGTTNGGAWYSVPGGMQDFNYLSS NCFEITVELSCEKFPPEETLKTYWEDNKNSLISYLEQIHRGVKGFVRDLQGNPIANATISVEGIDHDVTSAKDGDYWRLLIPG NYKLTASAPGYLAITKKVAVPYSPAAGVDFELESFSERKEEEKEELMEWWKMMSETLNF

靶点信息

研究背景	This gene encodes a member of the M14 family of metalloproteases. The encoded preproprotein is proteolytically processed to generate the mature peptidase. This peripheral membrane protein cleaves C-terminal amino acid residues and is involved in the biosynthesis of peptide hormones and neurotransmitters, including insulin. This protein may also function independently of its peptidase activity, as a neurotrophic factor that promotes neuronal survival, and as a sorting receptor that binds to regulated secretory pathway proteins, including prohormones. Mutations in this gene are implicated in type 2 diabetes.
------	---

基因ID	1363
基因名	CPE
Swiss	P16870
别名	CPE;CPH

产品验证



Western blot analysis of CPE expressed in Mouse brain,A-549,MCF7 using CPE Rabbit pAb at 1:1000. Secondary antibody: HRP Goat Anti-Rabbit IgG (H+L) at 1:5000. Lysates/proteins: 30ug per lane. Blocking buffer: 5% non-fat dry milk in TBST. Detection: ECL Enhanced Kit. Exposure time: 120s.

实验步骤

访问官网浏览详情: www.ablybio.cn