

# LITAF Rabbit pAb

货号: AYP17026

## 产品信息

反应	Human,Mouse
宿主	Rabbit
克隆性	Polyclonal
预测反应	
应用	WB IHC IP
推荐浓度	<b>WB:</b> 1:500 - 1:2000 <b>IHC:</b> 1:50 - 1:200 <b>IP:</b> 1:50 - 1:100
理论分子量	15kDa/17kDa/23kDa
实测分子量	20kDa
形式	Liquid
保存条件	Store at -20°C. Avoid freeze / thaw cycles. Buffer: PBS with 0.02% sodium azide,50% glycerol,pH7.3.
偶联物	Unconjugated
阳性对照	K-562,HeLa,HepG2,BT-474
细胞定位	Cytoplasmic side,Lysosome membrane,Peripheral membrane protein
纯化	Affinity purification

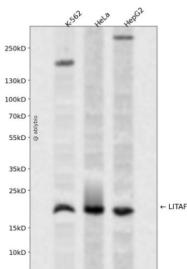
## 抗原信息

抗原信息	Recombinant fusion protein containing a sequence corresponding to amino acids 1-161 of human LITAF ( NP_004853.2).
序列	MSVPGPYQAATGPSSAPSAPPSYEETVAVNSYYPTPPAPMPGPTTGLVTGPDGKGMNPPSYYTQPAPIPNNNPITVQTVYV QHPITFLDRPIQMCCPSCNMIVSLSYNAGALTWLSCGSLCLLGCAGCCFIPFCVDALQDQVDHYCPNCRALLGTYKRL

## 靶点信息

研究背景	Lipopolysaccharide is a potent stimulator of monocytes and macrophages, causing secretion of tumor necrosis factor-alpha (TNF-alpha) and other inflammatory mediators. This gene encodes lipopolysaccharide-induced TNF-alpha factor, which is a DNA-binding protein and can mediate the TNF-alpha expression by direct binding to the promoter region of the TNF-alpha gene. The transcription of this gene is induced by tumor suppressor p53 and has been implicated in the p53-induced apoptotic pathway. Mutations in this gene cause Charcot-Marie-Tooth disease type 1C (CMT1C) and may be involved in the carcinogenesis of extramammary Paget's disease (EMPD). Multiple alternatively spliced transcript variants have been found for this gene.
基因ID	9516
基因名	LITAF
Swiss	Q99732
别名	LITAF;PIG7;SIMPLE;TP53I7

## 产品验证



Western blot analysis of LITAF expressed in K-562, HeLa, HepG2 using LITAF Rabbit pAb at 1:1000. Secondary antibody: HRP Goat Anti-Rabbit IgG (H+L) at 1:5000. Lysates/proteins: 30ug per lane. Blocking buffer: 5% non-fat dry milk in TBST. Detection: ECL Enhanced Kit. Exposure time: 120s.

## 实验步骤

访问官网浏览详情: [www.ablybio.cn](http://www.ablybio.cn)