

PLA2G1B Rabbit pAb

货号: **AYP17022**

产品信息

反应	Human,Mouse
宿主	Rabbit
克隆性	Polyclonal
预测反应	
应用	WB IHC
推荐浓度	WB: 1:500 - 1:2000 IHC: 1:100 - 1:200
理论分子量	16kDa
实测分子量	16kDa
形式	Liquid
保存条件	Store at -20°C. Avoid freeze / thaw cycles. Buffer: PBS with 0.01% thiomersal,50% glycerol,pH7.3.
偶联物	Unconjugated
阳性对照	A-549,Mouse pancreas,Mouse small intestine
细胞定位	Secreted
纯化	Affinity purification

抗原信息

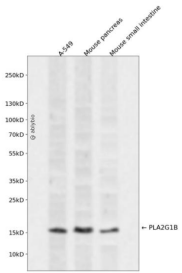
抗原信息	Recombinant fusion protein containing a sequence corresponding to amino acids 23-148 of human PLA2G1B (NP_000919.1).
序列	AVWQFRKMIKCVIPGSDPFLEYNNYGCYGLGGSGTPVDELDKCCQTHDNCYDQAKKLDSCFLLDNPYHTHTYSYSCSGSAITCSSKNKECEAFICNCDRNAAICFSKAPYNKAHKNLDTKKYCQS

靶点信息

研究背景	This gene encodes a secreted member of the phospholipase A2 (PLA2) class of enzymes, which is produced by the pancreatic acinar cells. The encoded calcium-dependent enzyme catalyzes the hydrolysis of the sn-2 position of membrane glycerophospholipids to release arachidonic acid (AA) and lysophospholipids. AA is subsequently converted by downstream metabolic enzymes to several bioactive lipophilic compounds (eicosanoids), including prostaglandins (PGs) and leukotrienes (LTs). The enzyme may be involved in several physiological processes including cell contraction, cell proliferation and pathological response.
------	---

基因ID	5319
基因名	PLA2G1B
Swiss	P04054
别名	PLA2G1B;PLA2;PLA2A;PPLA2

产品验证



Western blot analysis of PLA2G1B expressed in A-549, Mouse pancreas, Mouse small intestine using PLA2G1B Rabbit pAb at 1:1000. Secondary antibody: HRP Goat Anti-Rabbit IgG (H+L) at 1:5000. Lysates/proteins: 30ug per lane. Blocking buffer: 5% non-fat dry milk in TBST. Detection: ECL Enhanced Kit. Exposure time: 120s.

实验步骤

访问官网浏览详情: www.ablybio.cn