

PSMD6 Rabbit pAb

货号: **AYP17004**

产品信息

反应	Human,Mouse,Rat
宿主	Rabbit
克隆性	Polyclonal
预测反应	
应用	WB
推荐浓度	WB: 1:500 - 1:2000
理论分子量	45kDa
实测分子量	46kDa
形式	Liquid
保存条件	Store at -20°C. Avoid freeze / thaw cycles. Buffer: PBS with 0.01% thiomersal,50% glycerol,pH7.3.
偶联物	Unconjugated
阳性对照	Mouse brain,Mouse heart,Rat brain
细胞定位	cytosol,extracellular region,nucleoplasm
纯化	Affinity purification

抗原信息

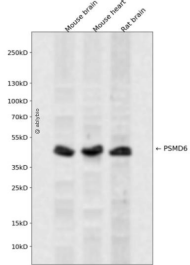
抗原信息	Recombinant fusion protein containing a sequence corresponding to amino acids 23-307 of human PSMD 6 (NP_055629.1).
序列	RFLLSLPEHRGDAAVRDELMAAVRDNNMAPYYEALCKSLDWQIDVDLLNKMKKANEDELKRLDDEELEDAEKNLGESEIRD AMMAKAEYLCRIGDKEGALTAFRKTYDKTVALGHRDLIVFYLLRIGLFYMDNDLITRNTEKAKSLIEEGGDWDRRNRLKVYQ GLYCVAIRDFKQAAELFLDTVSTFTSYELMDYKTFVTTYVYVSMIALERPDLREKVIKGAIEILEVLHSLPAVRQYLFSLYECRY SVFFQSLAVVEQEMKKDWLFPAPHYRYVREMRIHAYSQL

靶点信息

研究背景	This gene encodes a member of the protease subunit S10 family. The encoded protein is a subunit of the 26S proteasome which colocalizes with DNA damage foci and is involved in the ATP-dependent degradation of ubiquitinated proteins. Alternative splicing results in multiple transcript variants.
基因ID	9861

基因名	PSMD6
Swiss	Q15008
别名	PSMD6;Rpn7;S10;SGA-113M;p42A;p44S10

产品验证



Western blot analysis of PSMD6 expressed in Mouse brain, Mouse heart, Rat brain using PSMD6 Rabbit p Ab at 1:1000. Secondary antibody: HRP Goat Anti-Rabbit IgG (H+L) at 1:5000. Lysates/proteins: 30ug per lane. Blocking buffer: 5% non-fat dry milk in TBST. Detection: ECL Enhanced Kit. Exposure time: 120 S.

实验步骤

访问官网浏览详情: www.ablybio.cn