

FZR1 Rabbit pAb

货号: **AYP17003**

产品信息

反应	Human,Mouse,Rat
宿主	Rabbit
克隆性	Polyclonal
预测反应	
应用	WB IF/ICC
推荐浓度	WB: 1:100 - 1:500 IF/ICC: 1:50 - 1:200
理论分子量	44kDa/54kDa/55kDa
实测分子量	55KDa
形式	Liquid
保存条件	Store at -20°C. Avoid freeze / thaw cycles. Buffer: PBS with 0.05% proclin300,50% glycerol,pH7.3.
偶联物	Unconjugated
阳性对照	293T
细胞定位	Cytoplasm,Nucleus
纯化	Affinity purification

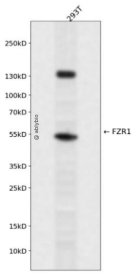
抗原信息

抗原信息	Recombinant fusion protein containing a sequence corresponding to amino acids 224-493 of human FZR1 (NP_057347.2).
序列	DLSVEGDSVTSVGSERGNLVAVGTHKGFVQIWDAAAGKKLSMLEGHTARV GALAWNAEQLSSGSRDRMILQRDIRTP PLQSERRLQGHRQEVCGLKWSTDHQLLASGGNDNKLLVWNHSSLSPVQQYTEHLAAVKAIWSPHQHGLLASGGGTA DRCIRFWNTLTGQPLQCIDTGSQVCNLAWSKHANELVSTHGYSQNQILVWKYPSLTQVAKLTGHSYRVLYLAMSPDGEAI VTGAGDETLRFWNVFSKTRSTKESVSVLNLFRIR

靶点信息

研究背景	Substrate-specific adapter for the anaphase promoting complex/cyclosome (APC/C E3 ubiquitin-protein ligase complex). Associates with the APC/C in late mitosis, in replacement of CDC20, and activates the APC/C during anaphase and telophase. The APC/C remains active in degrading substrates to ensure that positive regulators of the cell cycle do not accumulate prematurely. At the G1/S transition FZR1 is phosphorylated, leading to its dissociation from the APC/C. Following DNA damage, it is required for the G2 DNA damage checkpoint: its dephosphorylation and reassociation with the APC/C leads to the ubiquitination of PLK1, preventing entry into mitosis. Acts as an adapter for APC/C to target the DNA-end resection factor RBBP8/CtIP for ubiquitination and subsequent proteasomal degradation. Through the regulation of RBBP8/CtIP protein turnover, may play a role in DNA damage response, favoring DNA double-strand repair through error-prone non-homologous end joining (NHEJ) over error-free, RBBP8-mediated homologous recombination (HR).
基因ID	51343
基因名	FZR1
Swiss	Q9UM11
别名	FZR1;CDC20C;CDH1;FZR;FZR2;HCDH;HCDH1

产品验证



Western blot analysis of FZR1 expressed in 293T using FZR1 Rabbit pAb at 1:1000. Secondary antibody: HRP Goat Anti-Rabbit IgG (H+L) at 1:5000. Lysates/proteins: 30ug per lane. Blocking buffer: 5% non-fat dry milk in TBST. Detection: ECL Enhanced Kit. Exposure time: 120s.

实验步骤

访问官网浏览详情: www.ablybio.cn