

# CRYBB2 Rabbit pAb

货号: **AYP16994**

## 产品信息

反应	Human,Mouse,Rat
宿主	Rabbit
克隆性	Polyclonal
预测反应	
应用	WB
推荐浓度	<b>WB:</b> 1:500 - 1:2000
理论分子量	23kDa
实测分子量	27kDa
形式	Liquid
保存条件	Store at -20°C. Avoid freeze / thaw cycles. Buffer: PBS with 0.02% sodium azide,50% glycerol,pH7.3.
偶联物	Unconjugated
阳性对照	THP-1,SW620,HeLa,Mouse eye,Rat eye
细胞定位	
纯化	Affinity purification

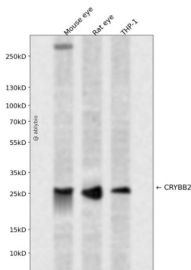
## 抗原信息

抗原信息	Recombinant fusion protein containing a sequence corresponding to amino acids 1-205 of human CRYBB2 (NP_000487.1).
序列	MASDHQTQAGKPQSLNPKIIIFEQENFQGHSHELNGPCPNLKETGVEKAGSVLVQAGPWVGYEQANCKGEQFVFEKGEY PRWDSWTSSRRDLSLRLPIKVDSQEHKIILYENPNFTGKKMEIIDDVPSFHAHGYQEKVSSVRVQSGTWVGYQYPGY RGLQYLLEKGDYKDSSDFGAPHPQVQSVRRIRDMQWHQRGAFHPSN

## 靶点信息

研究背景	Crystallins are separated into two classes: taxon-specific, or enzyme, and ubiquitous. The latter class constitutes the major proteins of vertebrate eye lens and maintains the transparency and refractive index of the lens. Since lens central fiber cells lose their nuclei during development, these crystallins are made and then retained throughout life, making them extremely stable proteins. Mammalian lens crystallins are divided into alpha, beta, and gamma families; beta and gamma crystallins are also considered as a superfamily. Alpha and beta families are further divided into acidic and basic groups. Seven protein regions exist in crystallins: four homologous motifs, a connecting peptide, and N- and C-terminal extensions. Beta-crystallins, the most heterogeneous, differ by the presence of the C-terminal extension (present in the basic group, none in the acidic group). Beta-crystallins form aggregates of different sizes and are able to self-associate to form dimers or to form heterodimers with other beta-crystallins. This gene, a beta basic group member, is part of a gene cluster with beta-A4, beta-B1, and beta-B3. A chain-terminating mutation was found to cause type 2 cerulean cataracts.
基因ID	1415
基因名	CRYBB2
Swiss	P43320
别名	CRYBB2;CCA2;CRYB2;CRYB2A;CTRCT3;D22S665

## 产品验证



Western blot analysis of CRYBB2 expressed in Mouse eye, Rat eye, THP-1 using CRYBB2 Rabbit pAb at 1:1000. Secondary antibody: HRP Goat Anti-Rabbit IgG (H+L) at 1:5000. Lysates/proteins: 30ug per lane. Blocking buffer: 5% non-fat dry milk in TBST. Detection: ECL Enhanced Kit. Exposure time: 120s.

## 实验步骤

访问官网浏览详情: [www.ablybio.cn](http://www.ablybio.cn)