

# MPC2 Rabbit pAb

货号: **AYP16987**

## 产品信息

反应	Mouse,Rat
宿主	Rabbit
克隆性	Polyclonal
预测反应	
应用	WB IHC
推荐浓度	<b>WB:</b> 1:500 - 1:1000 <b>IHC:</b> 1:50 - 1:200
理论分子量	14kDa
实测分子量	14KDa
形式	Liquid
保存条件	Store at -20°C. Avoid freeze / thaw cycles. Buffer: PBS with 0.01% thiomersal,50% glycerol,pH7.3.
偶联物	Unconjugated
阳性对照	Mouse kidney
细胞定位	inner mitochondrial membrane protein complex,mitochondrial inner membrane,mitochondrion,nucleus
纯化	Affinity purification

## 抗原信息

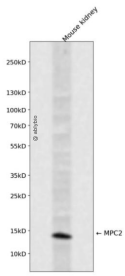
抗原信息	A synthetic peptide corresponding to a sequence within amino acids 1-60 of human MPC2 (NP_056230.1).
序列	MSAAGARGLRATYHRLLDKVELMLPEKLRPLYNHPAGPRTVFFWAPIMKWGLVCAGLADM

## 靶点信息

研究背景	Mediates the uptake of pyruvate into mitochondria.
基因ID	25874
基因名	MPC2
Swiss	O95563

别名	BRP44
----	-------

## 产品验证



Western blot analysis of MPC2 expressed in Mouse kidney using MPC2 Rabbit pAb at 1:1000. Secondary antibody: HRP Goat Anti-Rabbit IgG (H+L) at 1:5000. Lysates/proteins: 30ug per lane. Blocking buffer: 5% non-fat dry milk in TBST. Detection: ECL Enhanced Kit. Exposure time: 120s.

## 实验步骤

访问官网浏览详情: [www.ablybio.cn](http://www.ablybio.cn)