

# CFI Rabbit pAb

货号: **AYP16985**

## 产品信息

反应	Human,Mouse
宿主	Rabbit
克隆性	Polyclonal
预测反应	
应用	WB
推荐浓度	<b>WB:</b> 1:500 - 1:2000
理论分子量	65kDa
实测分子量	60kDa
形式	Liquid
保存条件	Store at -20°C. Avoid freeze / thaw cycles. Buffer: PBS with 0.02% sodium azide,50% glycerol,pH7.3.
偶联物	Unconjugated
阳性对照	Human serum
细胞定位	Secreted,extracellular space
纯化	Affinity purification

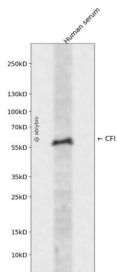
## 抗原信息

抗原信息	Recombinant fusion protein containing a sequence corresponding to amino acids 19-300 of human CFI (N P_000195.2).
序列	KVTYTSQEDLVEKKCLAKKYTHLSCDKVFCQPWQRCIEGTCVCKLPYQCPKNGTAVCATNRRSFPTYCQQKSLECLHPGT KFLNNGTCTAEGKFSVSLKHGNTDSEGIVEVKLVDQDKTMFICKSSWSMREANVACL DLGFQQGADTQRRFKLSDLIN STECLHVHCRGLETSLAECTFTKRRTMGYQDFADVVCYTQKADSPMDDFFQCVNGKYISQMKACDGINDCGDQSDEL CKACQKGFHCKSGVCIPSQYQCNGEVDICITGEDEVGCAGFASVA

## 靶点信息

研究背景	This gene encodes a serine proteinase that is essential for regulating the complement cascade. The encoded preproprotein is cleaved to produce both heavy and light chains, which are linked by disulfide bonds to form a heterodimeric glycoprotein. This heterodimer can cleave and inactivate the complement components C4b and C3b, and it prevents the assembly of the C3 and C5 convertase enzymes. Defects in this gene cause complement factor I deficiency, an autosomal recessive disease associated with a susceptibility to pyogenic infections. Mutations in this gene have been associated with a predisposition to atypical hemolytic uremic syndrome, a disease characterized by acute renal failure, microangiopathic hemolytic anemia and thrombocytopenia. Primary glomerulonephritis with immune deposits and age-related macular degeneration are other conditions associated with mutations of this gene.
基因ID	3426
基因名	CFI
Swiss	P05156
别名	CFI;AHUS3;ARMD13;C3BINA;C3b-INA;FI;IF;KAF

## 产品验证



Western blot analysis of CFI expressed in Human serum using CFI Rabbit pAb at 1:1000. Secondary antibody: HRP Goat Anti-Rabbit IgG (H+L) at 1:5000. Lysates/proteins: 30ug per lane. Blocking buffer: 5% non-fat dry milk in TBST. Detection: ECL Enhanced Kit. Exposure time: 120s.

## 实验步骤

访问官网浏览详情: [www.ablybio.cn](http://www.ablybio.cn)