

Cathepsin G Rabbit pAb

货号: AYP16980

产品信息

反应	Human,Mouse,Rat
宿主	Rabbit
克隆性	Polyclonal
预测反应	
应用	WB IHC IF/ICC
推荐浓度	WB: 1:100 - 1:500 IHC: 1:50 - 1:200 IF/ICC: 1:50 - 1:200
理论分子量	28kDa
实测分子量	29KDa
形式	Liquid
保存条件	Store at -20°C. Avoid freeze / thaw cycles. Buffer: PBS with 0.05% proclin300,50% glycerol,pH7.3.
偶联物	Unconjugated
阳性对照	Raji,Mouse liver,Mouse spleen,Rat liver,Rat thymus
细胞定位	Cell surface
纯化	Affinity purification

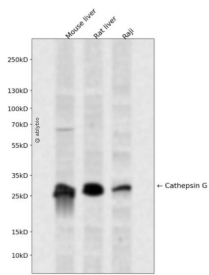
抗原信息

抗原信息	Recombinant fusion protein containing a sequence corresponding to amino acids 21-255 of human Cathepsin G (NP_001902.1).
序列	IIGGRESRPHSRPYMAYLQIQSPAGQSRCGGFLVREDFVLTAAHCWGSNINVTLGAHNIQRRENTQQHITARRAIRHPQYN QRTIQNDIMLLQLSRRVRRNRNVNPVALPRAQEGLRPGTLCTVAGWGRVSMRRGDTLREVQLRVQRDRQCLRIFGSYD PRRQICVGD RRERKA AFKGD SGG PLLC NNVAHGIVSYGKSSGVPPEVFTRVSSFLPWIRTTMRSFKLLDQMETPL

靶点信息

研究背景	The protein encoded by this gene, a member of the peptidase S1 protein family, is found in azurophilic granules of neutrophilic polymorphonuclear leukocytes. The encoded protease has a specificity similar to that of chymotrypsin C, and may participate in the killing and digestion of engulfed pathogens, and in connective tissue remodeling at sites of inflammation. In addition, the encoded protein is antimicrobial, with bacteriocidal activity against <i>S. aureus</i> and <i>N. gonorrhoeae</i> . Transcript variants utilizing alternative polyadenylation signals exist for this gene.
基因ID	1511
基因名	CTSG
Swiss	P08311
别名	CTSG;CATG;CG

产品验证



Western blot analysis of Cathepsin G expressed in Mouse liver, Rat liver, Raji using Cathepsin G Rabbit pAb at 1:1000. Secondary antibody: HRP Goat Anti-Rabbit IgG (H+L) at 1:5000. Lysates/proteins: 30ug per lane. Blocking buffer: 5% non-fat dry milk in TBST. Detection: ECL Enhanced Kit. Exposure time: 120s.

实验步骤

访问官网浏览详情: www.ablybio.cn