

# ECE1 Rabbit pAb

货号: **AYP16978**

## 产品信息

反应	Human,Mouse,Rat
宿主	Rabbit
克隆性	Polyclonal
预测反应	
应用	WB IHC IF/ICC
推荐浓度	<b>WB:</b> 1:500 - 1:1000 <b>IHC:</b> 1:50 - 1:100 <b>IF/ICC:</b> 1:50 - 1:100
理论分子量	85kDa/87kDa
实测分子量	130kDa
形式	Liquid
保存条件	Store at -20°C. Avoid freeze / thaw cycles. Buffer: PBS with 0.01% thiomersal,50% glycerol,pH7.3.
偶联物	Unconjugated
阳性对照	Mouse liver,HeLa
细胞定位	Cell membrane,Single-pass type II membrane protein
纯化	Affinity purification

## 抗原信息

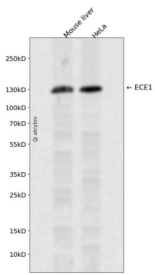
抗原信息	Recombinant fusion protein containing a sequence corresponding to amino acids 670-770 of human ECE1 (NP_001388.1).
序列	ADNGGLKAAAYRAYQNWWKKNGAEHSLPTLGLTNNQLFFLGFAQVWC SVRTPESSHEGLITDPHSPSRFRVIGLSLSNSKEF SEHFRCPPGSPMNPCHKCEVW

## 靶点信息

研究背景	The protein encoded by this gene is involved in proteolytic processing of endothelin precursors to biologically active peptides. Mutations in this gene are associated with Hirschsprung disease, cardiac defects and autonomic dysfunction. Alternatively spliced transcript variants encoding different isoforms have been noted for this gene.
------	---

基因ID	1889
基因名	ECE1
Swiss	P42892
别名	ECE1;ECE

## 产品验证



Western blot analysis of ECE1 expressed in Mouse liver, HeLa using ECE1 Rabbit pAb at 1:1000. Secondary antibody: HRP Goat Anti-Rabbit IgG (H+L) at 1:5000. Lysates/proteins: 30ug per lane. Blocking buffer: 5% non-fat dry milk in TBST. Detection: ECL Enhanced Kit. Exposure time: 120s.

## 实验步骤

访问官网浏览详情: [www.ablybio.cn](http://www.ablybio.cn)