

Mast Cell Chymase (CMA1) Rabbit pAb

货号: **AYP16971**

产品信息

反应	Human,Mouse
宿主	Rabbit
克隆性	Polyclonal
预测反应	
应用	WB
推荐浓度	WB: 1:500 - 1:2000
理论分子量	14kDa/27kDa
实测分子量	27kDa
形式	Liquid
保存条件	Store at -20°C. Avoid freeze / thaw cycles. Buffer: PBS with 0.01% thiomersal,50% glycerol,pH7.3.
偶联物	Unconjugated
阳性对照	A-549,A-431,HT-29,MCF7,Mouse lung,Mouse small intestine
细胞定位	Cytoplasmic granule,Secreted
纯化	Affinity purification

抗原信息

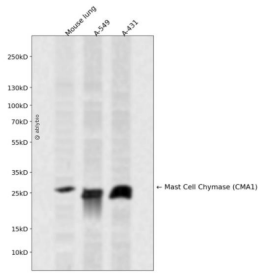
抗原信息	Recombinant fusion protein containing a sequence corresponding to amino acids 1-247 of human Mast Cell Chymase (CMA1) (NP_001827.1).
序列	MLLLPLPLLLFLLCSRAEAGEIIGGTECKPHSRPYMAYLEIVTSNGPSKFCGGFLIRRNFVLTAHCAGRSITVTLGAHNITEEDTWQKLEVIKQFRHPKYNTSTLHHDIMLLKKEKASLTAVGTLFPFSQFNFPVPPGRMCRVAGWGRTGVLKPGSDTLQEVKLRLMDPQACSHFRDFDHNQLCVGNPRKTKSAFKGDSGGPLLCAGVAQGVSYGRSDAKPPAVFTRISHYRPWINQILQAN

靶点信息

研究背景	This gene encodes a chymotryptic serine proteinase that belongs to the peptidase family S1. It is expressed in mast cells and is thought to function in the degradation of the extracellular matrix, the regulation of submucosal gland secretion, and the generation of vasoactive peptides. In the heart and blood vessels, this protein, rather than angiotensin converting enzyme, is largely responsible for converting angiotensin I to the vasoactive peptide angiotensin II. Alternative splicing results in multiple variants.
------	---

基因ID	1215
基因名	CMA1
Swiss	P23946
别名	CMA1;CYH;MCT1;chymase

产品验证



Western blot analysis of Mast Cell Chymase (CMA1) expressed in Mouse lung,A-549,A-431 using Mast Cell Chymase (CMA1) Rabbit pAb at 1:1000. Secondary antibody: HRP Goat Anti-Rabbit IgG (H+L) at 1:5000. Lysates/proteins: 30ug per lane. Blocking buffer: 5% non-fat dry milk in TBST. Detection: ECL Enhanced Kit. Exposure time: 120s.

实验步骤

访问官网浏览详情: www.ablybio.cn