

GPD1 Rabbit pAb

货号: **AYP16956**

产品信息

反应	Human,Mouse,Rat
宿主	Rabbit
克隆性	Polyclonal
预测反应	
应用	WB
推荐浓度	WB: 1:500 - 1:2000
理论分子量	35kDa/37kDa
实测分子量	38kDa
形式	Liquid
保存条件	Store at -20°C. Avoid freeze / thaw cycles. Buffer: PBS with 0.02% sodium azide,50% glycerol,pH7.3.
偶联物	Unconjugated
阳性对照	Mouse kidney,Mouse skeletal muscle,Rat liver
细胞定位	Cytoplasm
纯化	Affinity purification

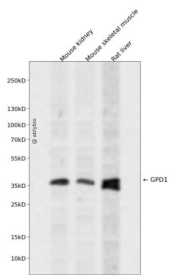
抗原信息

抗原信息	Recombinant fusion protein containing a sequence corresponding to amino acids 1-349 of human GPD1 (NP_005267.2).
序列	MASKKVCIVGSGNWGSAIAKIVGGNAAQLAQFDPRVTMWWFEEDIGGKKLTEIINTQHENVKYLPGHKLPPNVVAVPDVV QAAEDADILIFVVPHQFIGKICDQLKGHLKANATGSLIKGVDEGPNGLKLISEVIGERLGIPMSVLMGANIASEVADEKFCET TIGCKDPAQGGQLKELMQTPNFRITVVQEVDTVEICGALKNVVAVGAGFCDGLGFGDNTKAAVIRLGLMEMIAFAKLFCSG PVSSATFLESCGVADLITTCYGGRRNRKVAEAFARTGKSIEQLEKELLNGQKLQGPETARELYSILQHKGLVDKFLFMAVYK VCYEGQPVGEFIHCLQNHPEHM

靶点信息

研究背景	This gene encodes a member of the NAD-dependent glycerol-3-phosphate dehydrogenase family. The encoded protein plays a critical role in carbohydrate and lipid metabolism by catalyzing the reversible conversion of dihydroxyacetone phosphate (DHAP) and reduced nicotinae adenine dinucleotide (NADH) to glycerol-3-phosphate (G3P) and NAD+. The encoded cytosolic protein and mitochondrial glycerol-3-phosphate dehydrogenase also form a glycerol phosphate shuttle that facilitates the transfer of reducing equivalents from the cytosol to mitochondria. Mutations in this gene are a cause of transient infantile hypertriglyceridemia. Alternatively spliced transcript variants encoding multiple isoforms have been observed for this gene.
基因ID	2819
基因名	GPD1
Swiss	P21695
别名	GPD1;GPD-C;GPDH-C;HTGTI

产品验证



Western blot analysis of GPD1 expressed in Mouse kidney, Mouse skeletal muscle, Rat liver using GPD1 Rabbit pAb at 1:1000. Secondary antibody: HRP Goat Anti-Rabbit IgG (H+L) at 1:5000. Lysates/proteins: 30 ug per lane. Blocking buffer: 5% non-fat dry milk in TBST. Detection: ECL Enhanced Kit. Exposure time: 120s.

实验步骤

访问官网浏览详情: www.ablybio.cn