

SERPINA6 Rabbit pAb

货号: **AYP16917**

产品信息

反应	Human
宿主	Rabbit
克隆性	Polyclonal
预测反应	
应用	WB
推荐浓度	WB: 1:500 - 1:2000
理论分子量	45kDa
实测分子量	45kDa
形式	Liquid
保存条件	Store at -20°C. Avoid freeze / thaw cycles. Buffer: PBS with 0.02% sodium azide, 50% glycerol, pH7.3.
偶联物	Unconjugated
阳性对照	A-431, HT-29
细胞定位	Secreted
纯化	Affinity purification

抗原信息

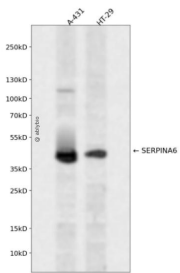
抗原信息	Recombinant fusion protein containing a sequence corresponding to amino acids 136-405 of human SERPINA6 (NP_001747.2).
序列	SLELLESFSADIKHYESEVLAMNFQDWATASRQINSYVKNKTQGKIVDLFSGLDSPAILVLVNYIFFKGTWTQPFDLSTR EENFYVDETTVVKVPMMMLQSSTISYLHDAELPCQLVQMNYVGNVTFFILPDKGKMNTVIAALSRTINRWSAGLTSSQV DLYIPKVTISGVYDLGDVLEEMGIADLFTNQANFSRITQDAQLKSSKVVHKAVLQLNEEGVDTAGSTGVTLNLTSPHILRFN QPFIIMFDHFTWSSLFLARVMNPV

靶点信息

研究背景	This gene encodes an alpha-globulin protein with corticosteroid-binding properties. This is the major transport protein for glucocorticoids and progestins in the blood of most vertebrates. The gene localizes to a chromosomal region containing several closely related serine protease inhibitors which may have evolved by duplication events.
------	---

基因ID	866
基因名	SERPINA6
Swiss	P08185
别名	SERPINA6;CBG

产品验证



Western blot analysis of SERPINA6 expressed in A-431,HT-29 using SERPINA6 Rabbit pAb at 1:1000. Secondary antibody: HRP Goat Anti-Rabbit IgG (H+L) at 1:5000. Lysates/proteins: 30ug per lane. Blocking buffer: 5% non-fat dry milk in TBST. Detection: ECL Enhanced Kit. Exposure time: 120s.

实验步骤

访问官网浏览详情: www.ablybio.cn