

EPC1 Rabbit pAb

货号: **AYP16912**

产品信息

反应	Human,Mouse
宿主	Rabbit
克隆性	Polyclonal
预测反应	
应用	WB IF/ICC
推荐浓度	WB: 1:500 - 1:2000 IF/ICC: 1:50 - 1:100
理论分子量	85kDa/90kDa/93kDa
实测分子量	105kDa
形式	Liquid
保存条件	Store at -20°C. Avoid freeze / thaw cycles. Buffer: PBS with 0.02% sodium azide,50% glycerol,pH7.3.
偶联物	Unconjugated
阳性对照	THP-1,Mouse lung,Mouse ovary
细胞定位	Nucleus
纯化	Affinity purification

抗原信息

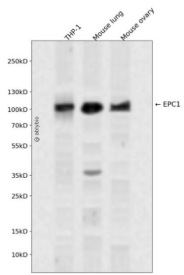
抗原信息	Recombinant fusion protein containing a sequence corresponding to amino acids 1-300 of human EPC1 (NP_079485.1).
序列	MSKLSFRARALDASKPLPVFRCELDLPDLHEYASINRAVPQMPTGMEKEEESSEHHLQRAISAQQVYGEKRDNMVIPVPEAES NIAYYESIYPGEFKMPKQLIHIQPFSLDAEQPDYDLSEDEVFNKLLKKMDICPLQFEEMIDRLEKGGQQPVSLQEAKLLL KEDDELIREVYEWIKRKNCRGSPSLIPSVKQEKRDGSSTNDPYVAFRRRTEKMQTRKNRKNDEASYEKMLKLRDLRAV TILEMIKRREKSKRELLHLTLEIMEKRYNLGDYNGEIMSEVMAQRQPMKPTYAIP

靶点信息

研究背景	This gene encodes a member of the polycomb group (PcG) family. The encoded protein is a component of the NuA4 histone acetyltransferase complex and can act as both a transcriptional activator and repressor . The encoded protein has been linked to apoptosis, DNA repair, skeletal muscle differentiation, gene silencing, and adult T-cell leukemia/lymphoma. Alternative splicing results in multiple transcript variants.
------	--

基因ID	80314
基因名	EPC1
Swiss	Q9H2F5
别名	EPC1;Epl1

产品验证



Western blot analysis of EPC1 expressed in THP-1, Mouse lung, Mouse ovary using EPC1 Rabbit pAb at 1:1000. Secondary antibody: HRP Goat Anti-Rabbit IgG (H+L) at 1:5000. Lysates/proteins: 30ug per lane. Blocking buffer: 5% non-fat dry milk in TBST. Detection: ECL Enhanced Kit. Exposure time: 120s.

实验步骤

访问官网浏览详情: www.ablybio.cn