

— ABLYBIO, Help Your Research



# BTAF1 Rabbit pAb

货号: **AYP16907**

## 产品信息

反应	Human,Rat
宿主	Rabbit
克隆性	Polyclonal
预测反应	
应用	WB IHC IP ChIP
推荐浓度	<b>WB:</b> 1:500 - 1:2000 <b>IHC:</b> 1:50 - 1:200 <b>IP:</b> 1:20 - 1:50 <b>ChIP:</b> 1:20 - 1:100
理论分子量	76kDa/206kDa
实测分子量	250kDa
形式	Liquid
保存条件	Store at -20°C. Avoid freeze / thaw cycles. Buffer: PBS with 0.02% sodium azide,50% glycerol,pH7.3.
偶联物	Unconjugated
阳性对照	HepG2,HeLa,MCF7,Rat testis
细胞定位	Nucleus
纯化	Affinity purification

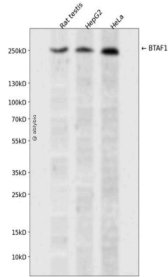
## 抗原信息

抗原信息	Recombinant fusion protein containing a sequence corresponding to amino acids 1600-1849 of human BTAF1 (NP_003963.1).
------	---

## 靶点信息

研究背景	This gene encodes a TAF (TATA box-binding protein-associated factor), which associates with TBP (TATA box-binding protein) to form the B-TFIID complex that is required for transcription initiation of genes by RNA polymerase II. This TAF has DNA-dependent ATPase activity, which drives the dissociation of TBP from DNA, freeing the TBP to associate with other TATA boxes or TATA-less promoters.
基因ID	9044
基因名	BTAF1
Swiss	O14981 ( <a href="https://www.uniprot.org/uniprotkb/O14981/entry">https://www.uniprot.org/uniprotkb/O14981/entry</a> )
别名	BTAF1,MOT1,TAF(II)170,TAF172,TAFII170,BTAF1 Rabbit pAb,ATP-dependent helicase BTAF1,B-TFIID transcription factor-associated 170 kDa subunit,TBP-associated factor 172

## 产品验证



Western blot analysis of BTAF1 expressed in Rat testis, HepG2, HeLa using BTAF1 Rabbit pAb at 1:1000. Secondary antibody: HRP Goat Anti-Rabbit IgG (H+L) at 1:5000. Lysates/proteins: 30ug per lane. Blocking buffer: 5% non-fat dry milk in TBST. Detection: ECL Enhanced Kit. Exposure time: 120s.

## 实验步骤

访问官网浏览详情: [www.ablybio.cn](http://www.ablybio.cn) (<https://www.ablybio.cn/www.ablybio.cn>)