

Phospho-IP3R-S1756 Rabbit pAb

货号: **AYP16903**

产品信息

反应	Human
宿主	Rabbit
克隆性	Polyclonal
预测反应	
应用	WB
推荐浓度	WB: 1:100 - 1:500
理论分子量	306-313kDa
实测分子量	320KDa
形式	Liquid
保存条件	Store at -20°C. Avoid freeze / thaw cycles. Buffer: PBS with 0.01% thiomersal,50% glycerol,pH7.3.
偶联物	Unconjugated
阳性对照	HeLa
细胞定位	endoplasmic reticulum,nucleolus,perinuclear region of cytoplasm,Schaffer collateral - CA1 synapse
纯化	Affinity purification

抗原信息

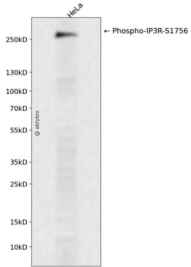
抗原信息	A synthetic phosphorylated peptide around S1756 of human ITPR1 (XP_011531986.1).
序列	RESLT

靶点信息

研究背景	This gene encodes an intracellular receptor for inositol 1,4,5-trisphosphate. Upon stimulation by inositol 1,4,5-trisphosphate, this receptor mediates calcium release from the endoplasmic reticulum. Mutations in this gene cause spinocerebellar ataxia type 15, a disease associated with a heterogeneous group of cerebellar disorders. Multiple transcript variants have been identified for this gene.
基因ID	3708
基因名	ITPR1

Swiss	Q14643
别名	ITPR1;ACV;CLA4;INSP3R1;IP3R;IP3R1;PPP1R94;SCA15;SCA16;SCA29

产品验证



Western blot analysis of Phospho-IP3R-S1756 expressed in HeLa using Phospho-IP3R-S1756 Rabbit pAb at 1:1000. Secondary antibody: HRP Goat Anti-Rabbit IgG (H+L) at 1:5000. Lysates/proteins: 30ug per lane. Blocking buffer: 5% non-fat dry milk in TBST. Detection: ECL Enhanced Kit. Exposure time: 120s.

实验步骤

访问官网浏览详情: www.ablybio.cn