

PRODH Rabbit pAb

货号: **AYP16902**

产品信息

反应	Human,Mouse,Rat
宿主	Rabbit
克隆性	Polyclonal
预测反应	
应用	WB
推荐浓度	WB: 1:500 - 1:2000
理论分子量	56kDa/59kDa/68kDa
实测分子量	68kDa
形式	Liquid
保存条件	Store at -20°C. Avoid freeze / thaw cycles. Buffer: PBS with 0.02% sodium azide,50% glycerol,pH7.3.
偶联物	Unconjugated
阳性对照	Mouse liver,Mouse kidney,Mouse heart,Rat liver, Rat kidney
细胞定位	Mitochondrion matrix
纯化	Affinity purification

抗原信息

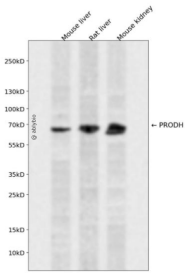
抗原信息	Recombinant fusion protein containing a sequence corresponding to amino acids 321-600 of human PRODH (NP_057419.4).
序列	IDSRTKLSKHLVVPNAQTGQLEPLLSRFTEEEELQMTRMLQRMDVLAKKATEMGVRLMVDAAEQTYFQPAISRRLTLEMQRKFNVEKPLIFNTYQCYLKDAYDNVTLDVELARREGWCFGAKLVRGAYLAQERARAAEIGYEDPINPTYEATNAMYHRCLDYVLEELKHNAKAKVMVASHNEDTVRFALRRMEELGLHPADHQVYFGQLLGMCDQISFPLGQAGYPVYKYVPYGPVMEVLPYLSRRALENSSLMKGTHRERQLLWLELLRRLRTGNLFHRPA

靶点信息

研究背景	This gene encodes a mitochondrial protein that catalyzes the first step in proline degradation. Mutations in this gene are associated with hyperprolinemia type 1 and susceptibility to schizophrenia 4 (SCZD4). This gene is located on chromosome 22q11.21, a region which has also been associated with the contiguous gene deletion syndromes, DiGeorge and CATCH22. Alternatively spliced transcript variants encoding different isoforms have been found for this gene.
------	---

基因ID	5625
基因名	PRODH
Swiss	O43272
别名	PRODH;HSPOX2;PIG6;POX;PRODH1;PRODH2;TP53I6

产品验证



Western blot analysis of PRODH expressed in Mouse liver,Rat liver,Mouse kidney using PRODH Rabbit p Ab at 1:1000. Secondary antibody: HRP Goat Anti-Rabbit IgG (H+L) at 1:5000. Lysates/proteins: 30ug per lane. Blocking buffer: 5% non-fat dry milk in TBST. Detection: ECL Enhanced Kit. Exposure time: 120s

实验步骤

访问官网浏览详情: www.ablybio.cn