

PHC1 Rabbit pAb

货号: **AYP16899**

产品信息

| | |
|-------|--|
| 反应 | Human,Mouse,Rat |
| 宿主 | Rabbit |
| 克隆性 | Polyclonal |
| 预测反应 | |
| 应用 | WB |
| 推荐浓度 | WB: 1:500 - 1:2000 |
| 理论分子量 | 105kDa |
| 实测分子量 | 125kDa/135kDa |
| 形式 | Liquid |
| 保存条件 | Store at -20°C. Avoid freeze / thaw cycles. Buffer: PBS with 0.02% sodium azide,50% glycerol,pH7.3. |
| 偶联物 | Unconjugated |
| 阳性对照 | A-549,Mouse kidney |
| 细胞定位 | Nucleus |
| 纯化 | Affinity purification |

抗原信息

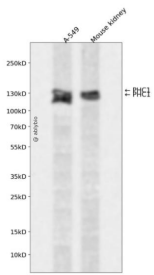
| | |
|------|---|
| 抗原信息 | Recombinant fusion protein containing a sequence corresponding to amino acids 750-940 of human PHC1 (NP_004417.2). |
| 序列 | FPVGCSQLLKESEKPLQTLPTGLTENQSGGPLGVDSPEAELDKKANLLKCEYCGKYAPAEQFRGSKRFCMTCAKRYNV SCSHQFRLKRKKMKEFQEANYARVRRRGPRRSSSDIARAKIQGKCHRGQEDSSRGSDNSSYDEALSPTSPGPLSVRAGH GERDLGNPNTAPPTPELHGINPVFLSSNPSRW |

靶点信息

| | |
|------|---|
| 研究背景 | This gene is a homolog of the Drosophila polyhomeotic gene, which is a member of the Polycomb group of genes. The gene product is a component of a multimeric protein complex that contains EDR2 and the vertebrate Polycomb protein BMH1. The gene product, the EDR2 protein, and the Drosophila polyhomeotic protein share 2 highly conserved domains, named homology domains I and II. These domains are involved in protein-protein interactions and may mediate heterodimerization of the protein encoded by this gene and the EDR2 protein. |
|------|---|

| | |
|-------|-----------------------------|
| 基因ID | 1911 |
| 基因名 | PHC1 |
| Swiss | P78364 |
| 别名 | PHC1;EDR1;HPH1;MCPH11;RAE28 |

产品验证



Western blot analysis of PHC1 expressed in A-549, Mouse kidney using PHC1 Rabbit pAb at 1:1000. Secondary antibody: HRP Goat Anti-Rabbit IgG (H+L) at 1:5000. Lysates/proteins: 30ug per lane. Blocking buffer: 5% non-fat dry milk in TBST. Detection: ECL Enhanced Kit. Exposure time: 120s.

实验步骤

访问官网浏览详情: www.ablybio.cn