

RPS3A Rabbit pAb

货号: **AYP16891**

产品信息

反应	Human,Mouse,Rat
宿主	Rabbit
克隆性	Polyclonal
预测反应	
应用	WB IHC IF/ICC IP
推荐浓度	WB: 1:500 - 1:2000 IHC: 1:50 - 1:200 IF/ICC: 1:50 - 1:200 IP: 1:50 - 1:100
理论分子量	29kDa
实测分子量	35kDa
形式	Liquid
保存条件	Store at -20°C. Avoid freeze / thaw cycles. Buffer: PBS with 0.02% sodium azide,50% glycerol,pH7.3.
偶联物	Unconjugated
阳性对照	MCF7,293T,A-549,Mouse liver,Mouse lung,Mouse ovary,Mouse pancreas,Rat ovary
细胞定位	Cytoplasm,Nucleus
纯化	Affinity purification

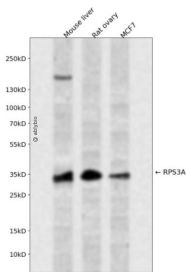
抗原信息

抗原信息	Recombinant fusion protein containing a sequence corresponding to amino acids 1-264 of human RPS3A (NP_000997.1).
序列	MAVGKNKRLTKGGKKGAKKKVDPFSKKDWYDVKAPAMFNIRNIGKTLVTRTQGTIASDGLKGRVFEVSLADLQNDEV AFRKFKLITEDVQGNCLTNFHGMDLTRDKMCSMVKKWQTMIEAHVDVKTTDGYLLRFLFCVGFTKRNNQIRKTSYAQH QQVRQIRKKMMEIMTREVQTNDLKEVVNKLIPDSIGKDIEKACQSIYPLHDVFRVKVMLKKPKFELGKLMELHGEGSSSG KATGDETGAKVERADGYEPPVQESV

靶点信息

研究背景	Ribosomes, the organelles that catalyze protein synthesis, consist of a small 40S subunit and a large 60S subunit. Together these subunits are composed of 4 RNA species and approximately 80 structurally distinct proteins. This gene encodes a ribosomal protein that is a component of the 40S subunit. The protein belongs to the S3AE family of ribosomal proteins. It is located in the cytoplasm. Disruption of the gene encoding rat ribosomal protein S3a, also named v-fos transformation effector protein, in v-fos-transformed rat cells results in reversion of the transformed phenotype. This gene is co-transcribed with the U73A and U73B small nucleolar RNA genes, which are located in its fourth and third introns, respectively. As is typical for genes encoding ribosomal proteins, there are multiple processed pseudogenes of this gene dispersed through the genome. Alternatively spliced transcript variants have been found for this gene.
基因ID	6189
基因名	RPS3A
Swiss	P61247
别名	RPS3A;FTE1;MFTL;S3A

产品验证



Western blot analysis of RPS3A expressed in Mouse liver,Rat ovary,MCF7 using RPS3A Rabbit pAb at 1:1000. Secondary antibody: HRP Goat Anti-Rabbit IgG (H+L) at 1:5000. Lysates/proteins: 30ug per lane. Blocking buffer: 5% non-fat dry milk in TBST. Detection: ECL Enhanced Kit. Exposure time: 120s.

实验步骤

访问官网浏览详情: www.ablybio.cn