

RPL4 Rabbit pAb

货号: **AYP16889**

产品信息

反应	Human,Mouse,Rat
宿主	Rabbit
克隆性	Polyclonal
预测反应	
应用	WB IHC
推荐浓度	WB: 1:500 - 1:2000 IHC: 1:50 - 1:200
理论分子量	47kDa
实测分子量	48kDa
形式	Liquid
保存条件	Store at -20°C. Avoid freeze / thaw cycles. Buffer: PBS with 0.02% sodium azide,50% glycerol,pH7.3.
偶联物	Unconjugated
阳性对照	SH-SY5Y,HeLa,HepG2,HL-60,HT-1080,MCF7,Mouse liver
细胞定位	cytoplasm,cytosol,cytosolic ribosome,extracellular exosome,focal adhesion,nucleolus,nucleus,rough endoplasmic reticulum
纯化	Affinity purification

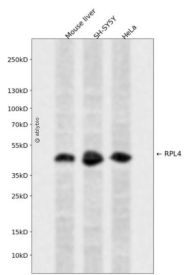
抗原信息

抗原信息	Recombinant fusion protein containing a sequence corresponding to amino acids 1-240 of human RPL4 (NP_000959.2).
序列	MACARPLISVYSEKGESSGKNVTLPVFKAPIRPDIVNFVHTNLRKNNRQPYAVSELAGHQ TSAESWGTGRAVARIPRVRG GGTHRSGQGAFGNMCRGGRMFAPTKTWRRWHRRVNTTQKRYAICSAALPALVMSKGHRIEEVPELPLVVEDKVE GYKKTKEAVLLKLLKAWNDIKKVYASQRM RAGKGMRRRRRIQRRGPCIIYNEDNGIIFRNPIGITLLNVSKLNILKL

靶点信息

研究背景	Ribosomes, the organelles that catalyze protein synthesis, consist of a small 40S subunit and a large 60S subunit. Together these subunits are composed of 4 RNA species and approximately 80 structurally distinct proteins. This gene encodes a ribosomal protein that is a component of the 60S subunit. The protein belongs to the L4E family of ribosomal proteins. It is located in the cytoplasm. As is typical for genes encoding ribosomal proteins, there are multiple processed pseudogenes of this gene dispersed through the genome.
基因ID	6124
基因名	RPL4
Swiss	P36578
别名	RPL4;L4

产品验证



Western blot analysis of RPL4 expressed in Mouse liver, SH-SY5Y, HeLa using RPL4 Rabbit pAb at 1:1000. Secondary antibody: HRP Goat Anti-Rabbit IgG (H+L) at 1:5000. Lysates/proteins: 30ug per lane. Blocking buffer: 5% non-fat dry milk in TBST. Detection: ECL Enhanced Kit. Exposure time: 120s.

实验步骤

访问官网浏览详情: www.ablybio.cn