

RPS12 Rabbit pAb

货号: **AYP16888**

产品信息

反应	Human,Mouse,Rat
宿主	Rabbit
克隆性	Polyclonal
预测反应	
应用	WB IF/ICC
推荐浓度	WB: 1:500 - 1:2000 IF/ICC: 1:10 - 1:100
理论分子量	14kDa
实测分子量	15kDa
形式	Liquid
保存条件	Store at -20°C. Avoid freeze / thaw cycles. Buffer: PBS with 0.02% sodium azide,50% glycerol,pH7.3.
偶联物	Unconjugated
阳性对照	HeLa,MCF7,HepG2,Raji,NIH/3T3,Mouse lung,Mouse spleen,Mouse thymus
细胞定位	Cytoplasm
纯化	Affinity purification

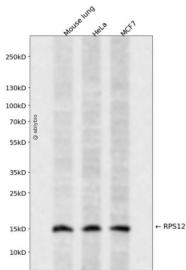
抗原信息

抗原信息	Recombinant fusion protein containing a sequence corresponding to amino acids 1-132 of human RPS12 (NP_001007.2).
序列	MAEEGIAAGGVMDVNTALQEVLKTAIHDGLARGIREAAKALDKRQAHLVCLASNCDEPMYVKLVEALCAEHQINLIKVDD NKKLGEWVGLCKIDREGKPRKVVGCSVVVKDYGKESQAKDVIEEYFKCKK

靶点信息

研究背景	Ribosomes, the organelles that catalyze protein synthesis, consist of a small 40S subunit and a large 60S subunit. Together these subunits are composed of 4 RNA species and approximately 80 structurally distinct proteins. This gene encodes a ribosomal protein that is a component of the 40S subunit. The protein belongs to the S12E family of ribosomal proteins. It is located in the cytoplasm. Increased expression of this gene in colorectal cancers compared to matched normal colonic mucosa has been observed. As is typical for genes encoding ribosomal proteins, there are multiple processed pseudogenes of this gene dispersed through the genome.
基因ID	6206
基因名	RPS12
Swiss	P25398
别名	RPS12;S12

产品验证



Western blot analysis of RPS12 expressed in Mouse lung, HeLa, MCF7 using RPS12 Rabbit pAb at 1:1000. Secondary antibody: HRP Goat Anti-Rabbit IgG (H+L) at 1:5000. Lysates/proteins: 30ug per lane. Blocking buffer: 5% non-fat dry milk in TBST. Detection: ECL Enhanced Kit. Exposure time: 120s.

实验步骤

访问官网浏览详情: www.ablybio.cn