

CSTF1 Rabbit pAb

货号: **AYP16881**

产品信息

反应	Human,Mouse,Rat
宿主	Rabbit
克隆性	Polyclonal
预测反应	
应用	WB IHC
推荐浓度	WB: 1:500 - 1:2000 IHC: 1:100 - 1:200
理论分子量	48kDa
实测分子量	50kDa
形式	Liquid
保存条件	Store at -20°C. Avoid freeze / thaw cycles. Buffer: PBS with 0.02% sodium azide,50% glycerol,pH7.3.
偶联物	Unconjugated
阳性对照	U2OS,MCF7,SW480,Mouse thymus,Rat thymus
细胞定位	Nucleus
纯化	Affinity purification

抗原信息

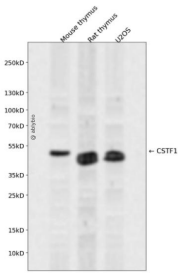
抗原信息	Recombinant fusion protein containing a sequence corresponding to amino acids 1-220 of human CSTF1 (NP_001315.1).
序列	MYRTKVGLKDRQQLYKLIISQLLYDGYISIANGLINEIKPQSVCAPSEQLLHLIKLGMENDDTAVQYAIGRSDTVAPGTGIDLEFDADVQTMSP EASEYETCYVTSHKGPCRVATYSRDGQLIATGSADASIKILDTERMLAKSAMP IEVMMNETAQQN MENHPVIRTLYD HVDEVTCLAFHPTEQILASGSRDYTLKLFDYSKPSAKRAF KYIQEA EML

靶点信息

研究背景	This gene encodes one of three subunits which combine to form cleavage stimulation factor (CSTF). CSTF is involved in the polyadenylation and 3'end cleavage of pre-mRNAs. Similar to mammalian G protein bet a subunits, this protein contains transducin-like repeats. Several transcript variants with different 5' UTR, but encoding the same protein, have been found for this gene.
------	---

基因ID	1477
基因名	CSTF1
Swiss	Q05048
别名	CSTF1;CstF-50;CstFp50

产品验证



Western blot analysis of CSTF1 expressed in Mouse thymus,Rat thymus,U2OS using CSTF1 Rabbit pAb at 1:1000. Secondary antibody: HRP Goat Anti-Rabbit IgG (H+L) at 1:5000. Lysates/proteins: 30ug per lane. Blocking buffer: 5% non-fat dry milk in TBST. Detection: ECL Enhanced Kit. Exposure time: 120s.

实验步骤

访问官网浏览详情: www.ablybio.cn