

ETF1 Rabbit pAb

货号: **AYP16880**

产品信息

反应	Human,Mouse,Rat
宿主	Rabbit
克隆性	Polyclonal
预测反应	
应用	WB IF/ICC
推荐浓度	WB: 1:200 - 1:2000 IF/ICC: 1:50 - 1:200
理论分子量	45kDa/49kDa
实测分子量	55kDa
形式	Liquid
保存条件	Store at -20°C. Avoid freeze / thaw cycles. Buffer: PBS with 0.02% sodium azide,50% glycerol,pH7.3.
偶联物	Unconjugated
阳性对照	Raji,U-87MG,HT-1080,SKOV3,Mouse liver,Mouse heart,Mouse kidney,Rat heart
细胞定位	Cytoplasm
纯化	Affinity purification

抗原信息

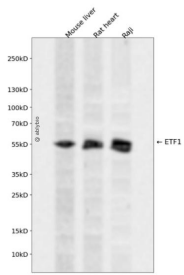
抗原信息	Recombinant fusion protein containing a sequence corresponding to amino acids 278-437 of human ETF1 (NP_004721.1).
序列	VKFIQEKKLIGRYFDEISQDTGKYCFGVEDTLKALEMGAVEILIVYENLDMRYVLHCQGTEEEKILYLTPQEKDKSHFTDKE TGQHEHELIESMPLLEWFANNYKFGATLEIVTDKSEQSGFVKGFGGIGILRYRVDFQGMEYQGGDDEFFDLDDY

靶点信息

研究背景	This gene encodes a class-1 polypeptide chain release factor. The encoded protein plays an essential role in directing termination of mRNA translation from the termination codons UAA, UAG and UGA. This protein is a component of the SURF complex which promotes degradation of prematurely terminated mRNAs via the mechanism of nonsense-mediated mRNA decay (NMD). Alternate splicing results in multiple transcript variants. Pseudogenes of this gene are found on chromosomes 6, 7, and X.
------	---

基因ID	2107
基因名	ETF1
Swiss	P62495
别名	ETF1;D5S1995;ERF;ERF1;RF1;SUP45L1;TB3-1

产品验证



Western blot analysis of ETF1 expressed in Mouse liver,Rat heart,Raji using ETF1 Rabbit pAb at 1:1000. Secondary antibody: HRP Goat Anti-Rabbit IgG (H+L) at 1:5000. Lysates/proteins: 30ug per lane. Blocking buffer: 5% non-fat dry milk in TBST. Detection: ECL Enhanced Kit. Exposure time: 120s.

实验步骤

访问官网浏览详情: www.ablybio.cn