

# RPL7 Rabbit pAb

货号: **AYP16877**

## 产品信息

反应	Human,Mouse,Rat
宿主	Rabbit
克隆性	Polyclonal
预测反应	
应用	WB IHC IF/ICC
推荐浓度	<b>WB:</b> 1:500 - 1:2000 <b>IHC:</b> 1:50 - 1:100 <b>IF/ICC:</b> 1:50 - 1:100
理论分子量	29kDa
实测分子量	29kDa
形式	Liquid
保存条件	Store at -20°C. Avoid freeze / thaw cycles. Buffer: PBS with 0.01% thiomersal,50% glycerol,pH7.3.
偶联物	Unconjugated
阳性对照	A-549,MCF7,A375,HeLa,293T,Mouse kidney,Mouse liver
细胞定位	cytoplasm,cytosol,cytosolic ribosome,focal adhesion,nucleolus,nucleus
纯化	Affinity purification

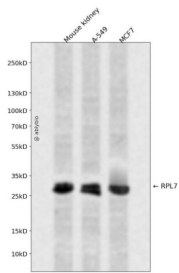
## 抗原信息

抗原信息	Recombinant fusion protein containing a sequence corresponding to amino acids 1-248 of human RPL7 (N P_000962.2).
序列	MEGVEEKKKEVPAVPETLKKRRNFAELKIKRLRKKFAQKMLRKARRKLIYEKAKHYHKEYRQMYRTEIRMARMARKAGNFYVPAEPKLA FVIRIRINGVSPKVRKVLQLLRQIFNGTFVKLNKASINMLRIVEPYIAWGYPNLKS VNELIYKRGYGKINKKRIA LTDNALIARSLGKYGIICMEDLIHEIYTVGKRFKEANNFLWPFKLSSPRGGM KKKTTTHFVEGGDAGNREDQINRLIRRMN

## 靶点信息

研究背景	Ribosomes, the organelles that catalyze protein synthesis, consist of a small 40S subunit and a large 60S subunit. Together these subunits are composed of 4 RNA species and approximately 80 structurally distinct proteins. This gene encodes a ribosomal protein that is a component of the 60S subunit. The protein belongs to the L30P family of ribosomal proteins. It contains an N-terminal basic region-leucine zipper (BZIP)-like domain and the RNP consensus submotif RNP2. In vitro the BZIP-like domain mediates homodimerization and stable binding to DNA and RNA, with a preference for 28S rRNA and mRNA. The protein can inhibit cell-free translation of mRNAs, suggesting that it plays a regulatory role in the translation apparatus. It is located in the cytoplasm. The protein has been shown to be an autoantigen in patients with systemic autoimmune diseases, such as systemic lupus erythematosus. As is typical for genes encoding ribosomal proteins, there are multiple processed pseudogenes of this gene dispersed through the genome.
基因ID	6129
基因名	RPL7
Swiss	P18124
别名	RPL7;L7;humL7-1

## 产品验证



Western blot analysis of RPL7 expressed in Mouse kidney, A-549, MCF7 using RPL7 Rabbit pAb at 1:1000. Secondary antibody: HRP Goat Anti-Rabbit IgG (H+L) at 1:5000. Lysates/proteins: 30ug per lane. Blocking buffer: 5% non-fat dry milk in TBST. Detection: ECL Enhanced Kit. Exposure time: 120s.

## 实验步骤

访问官网浏览详情: [www.ablybio.cn](http://www.ablybio.cn)