

RPL17 Rabbit pAb

货号: **AYP16874**

产品信息

反应	Human,Mouse,Rat
宿主	Rabbit
克隆性	Polyclonal
预测反应	
应用	WB IHC IF/ICC
推荐浓度	WB: 1:200 - 1:2000 IHC: 1:50 - 1:200 IF/ICC: 1:50 - 1:200
理论分子量	17kDa/21kDa/26kDa
实测分子量	21kDa
形式	Liquid
保存条件	Store at -20°C. Avoid freeze / thaw cycles. Buffer: PBS with 0.02% sodium azide,50% glycerol,pH7.3.
偶联物	Unconjugated
阳性对照	HepG2,293T,A-549,SW480,HeLa,Mouse lung,Mouse thymus,Rat liver
细胞定位	cytoplasm,cytosol,cytosolic ribosome,nucleus
纯化	Affinity purification

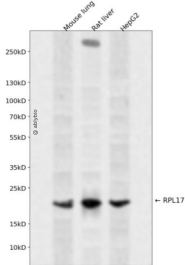
抗原信息

抗原信息	Recombinant fusion protein containing a sequence corresponding to amino acids 1-184 of human RPL17 (NP_000976.1).
序列	MVRYSLDPENPTKSKSRGSNLRVHFKNTRETAQAIGMHIRKATKYLKDVTLQKQCVPFRRYNGGVGRCAQAKQWGW TQGRWPKKSAEFLHMLKNAESNAELKGLDVDLSLVIEHIQVKNKAPKMRRTYRAHGRINPYMSSPCHIEMILTEKEQIVPKP EEEVAQKKKISQKLLKKQKLMARE

靶点信息

研究背景	Ribosomes, the organelles that catalyze protein synthesis, consist of a small 40S subunit and a large 60S subunit. Together these subunits are composed of 4 RNA species and approximately 80 structurally distinct proteins. This gene encodes a ribosomal protein that is a component of the 60S subunit. The protein belongs to the L22P family of ribosomal proteins. It is located in the cytoplasm. This gene has been referred to as rpl23 because the encoded protein shares amino acid identity with ribosomal protein L23 from <i>Halo bacterium marismortui</i> ; however, its official symbol is RPL17. As is typical for genes encoding ribosomal proteins, there are multiple processed pseudogenes of this gene dispersed through the genome. Alternative splicing results in multiple transcript variants. Read-through transcription also exists between this gene and the neighboring downstream C18orf32 (chromosome 18 open reading frame 32) gene.
基因ID	6139
基因名	RPL17
Swiss	P18621
别名	RPL17;L17;PD-1;RPL23

产品验证



Western blot analysis of RPL17 expressed in Mouse lung,Rat liver,HepG2 using RPL17 Rabbit pAb at 1:1000. Secondary antibody: HRP Goat Anti-Rabbit IgG (H+L) at 1:5000. Lysates/proteins: 30ug per lane. Blocking buffer: 5% non-fat dry milk in TBST. Detection: ECL Enhanced Kit. Exposure time: 120s.

实验步骤

访问官网浏览详情: www.ablybio.cn