

POP1 Rabbit pAb

货号: **AYP16871**

产品信息

反应	Mouse,Rat
宿主	Rabbit
克隆性	Polyclonal
预测反应	
应用	WB
推荐浓度	WB: 1:200 - 1:2000
理论分子量	114kDa
实测分子量	115kDa
形式	Liquid
保存条件	Store at -20°C. Avoid freeze / thaw cycles. Buffer: PBS with 0.02% sodium azide,50% glycerol,pH7.3.
偶联物	Unconjugated
阳性对照	Mouse liver,Mouse kidney,Rat liver
细胞定位	Nucleus,nucleolus
纯化	Affinity purification

抗原信息

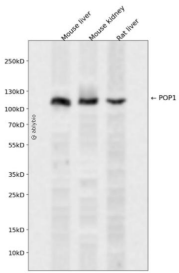
抗原信息	Recombinant fusion protein containing a sequence corresponding to amino acids 1-210 of human POP1 (NP_055844.2).
序列	MSNAKERKHAKMNRNQPTNVTLSGFGVADRGVKHHSGGEKPFQAQKQEPHPGTSRQRQTRVNPHSLPDPEVNEQSSS KGMFRKKGGWKAGPEGTSQEIPKYITASTFAQARAAEISAMLKAVTQKSSNSLVFQTLPRHMRRRAMSHNVKRLPRRLQE IAQKEAEKAVHQKKEHSKNKCHKARRCHMNRTLEFNRRQKKNIWLETHIWHAK

靶点信息

研究背景	This gene encodes the protein subunit of two different small nucleolar ribonucleoprotein complexes: the endoribonuclease for mitochondrial RNA processing complex and the ribonuclease P complex. The encoded protein is a ribonuclease that localizes to the nucleus and functions in pre-RNA processing. This protein is also an autoantigen in patients suffering from connective tissue diseases. Alternative splicing results in multiple transcript variants.
------	---

基因ID	10940
基因名	POP1
Swiss	Q99575
别名	POP1;ANXD2

产品验证



Western blot analysis of POP1 expressed in Mouse liver, Mouse kidney, Rat liver using POP1 Rabbit pAb at 1:1000. Secondary antibody: HRP Goat Anti-Rabbit IgG (H+L) at 1:5000. Lysates/proteins: 30ug per lane . Blocking buffer: 5% non-fat dry milk in TBST. Detection: ECL Enhanced Kit. Exposure time: 120s.

实验步骤

访问官网浏览详情: www.ablybio.cn