

# CNOT1 Rabbit pAb

货号: **AYP16869**

## 产品信息

反应	Human,Mouse
宿主	Rabbit
克隆性	Polyclonal
预测反应	
应用	WB IF/ICC
推荐浓度	<b>WB:</b> 1:200 - 1:2000 <b>IF/ICC:</b> 1:50 - 1:200
理论分子量	173kDa/241kDa/266kDa
实测分子量	267kDa
形式	Liquid
保存条件	Store at -20°C. Avoid freeze / thaw cycles. Buffer: PBS with 0.01% thiomersal,50% glycerol,pH7.3.
偶联物	Unconjugated
阳性对照	U-87MG,293T,LO2,A-549,HeLa,mouse brain
细胞定位	Cytoplasm,Nucleus,P-body
纯化	Affinity purification

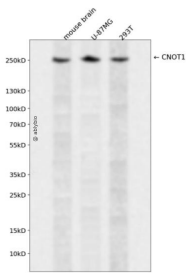
## 抗原信息

抗原信息	Recombinant fusion protein containing a sequence corresponding to amino acids 2137-2376 of human CN OT1 (NP_057368.3).
序列	PRNMRLPDPFTP NLKVDMLSEINIAPRILTNTFTGVMPPQFKKDLDSYLKTRSPVTFLSDLRSNLQVSNEPGNRYNLQLINALV LYVGTQAI AHIHNKGSTPSMSTITHSAHMDIFQNLAVDLDTTEGRYLFLNAIANQLRYPNSHSHYFSC TMLYLFAEANTEAIQE QITRVLLERLIVNRPHPWGLLITFIELIKNPAFKFWNHEFVHCAPEIEKLFQSV AQCCMGQKQAQQVMEGTGAS

## 靶点信息

研究背景	Scaffolding component of the CCR4-NOT complex which is one of the major cellular mRNA deadenylases and is linked to various cellular processes including bulk mRNA degradation, miRNA-mediated repression, translational repression during translational initiation and general transcription regulation. Additional complex functions may be a consequence of its influence on mRNA expression. Its scaffolding function implies its interaction with the catalytic complex module and diverse RNA-binding proteins mediating the complex recruitment to selected mRNA 3'UTRs. Involved in degradation of AU-rich element (ARE-containing mRNAs probably via association with ZFP36. Mediates the recruitment of the CCR4-NOT complex to miRNA targets and to the RISC complex via association with TNRC6A, TNRC6B or TNRC6C. Acts as a transcriptional repressor. Represses the ligand-dependent transcriptional activation by nuclear receptors. Involved in the maintenance of embryonic stem (ES cell identity).
基因ID	23019
基因名	CNOT1
Swiss	A5YKK6
别名	CNOT1;AD-005;CDC39;NOT1;NOT1H

## 产品验证



Western blot analysis of CNOT1 expressed in mouse brain,U-87MG,293T using CNOT1 Rabbit pAb at 1:1000. Secondary antibody: HRP Goat Anti-Rabbit IgG (H+L) at 1:5000. Lysates/proteins: 30ug per lane. Blocking buffer: 5% non-fat dry milk in TBST. Detection: ECL Enhanced Kit. Exposure time: 120s.

## 实验步骤

访问官网浏览详情: [www.ablybio.cn](http://www.ablybio.cn)