

SRRM1 Rabbit pAb

货号: **AYP16858**

产品信息

反应	Human,Mouse
宿主	Rabbit
克隆性	Polyclonal
预测反应	
应用	WB IHC
推荐浓度	WB: 1:500 - 1:1000 IHC: 1:100 - 1:500
理论分子量	102kDa
实测分子量	102kDa
形式	Liquid
保存条件	Store at -20°C. Avoid freeze / thaw cycles. Buffer: PBS with 0.01% thiomersal,50% glycerol,pH7.3.
偶联物	Unconjugated
阳性对照	HT-29,OVCAR3,LO2,HeLa,Jurkat,Mouse liver,Mouse kidney
细胞定位	Nucleus matrix,Nucleus speckle
纯化	Affinity purification

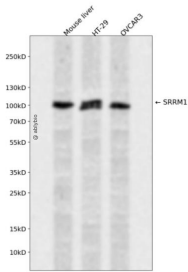
抗原信息

抗原信息	Recombinant fusion protein containing a sequence corresponding to amino acids 1-160 of human SRRM1 (NP_005830.2).
序列	MDAGFFRGTSAEQDNRFSNKQKLLKQLKFAECLEKKVDM SKVNLEVIKPWITKRVTEILGFEDDVVIEFIFNQLEVKNPDS KMMQINLTGFLNGKNAREFMGELWPLLLSAQENIAGIPSAFLELKKEEIKRQIEQEKLASMKKQDEDKDRDKEEKE

靶点信息

研究背景	Part of pre- and post-splicing multiprotein mRNP complexes. Involved in numerous pre-mRNA processing events. Promotes constitutive and exonic splicing enhancer (ESE-dependent splicing activation by bridging together sequence-specific (SR family proteins, SFRS4, SFRS5 and TRA2B/SFRS10 and basal snRNP (SNRP70 and SNRPA1 factors of the spliceosome. Stimulates mRNA 3'-end cleavage independently of the formation of an exon junction complex. Binds both pre-mRNA and spliced mRNA 20-25 nt upstream of exon-exon junctions. Binds RNA and DNA with low sequence specificity and has similar preference for either double- or single-stranded nucleic acid substrates.
基因ID	10250
基因名	SRRM1
Swiss	Q8IYB3
别名	SRRM1;160-KD;POP101;SRM160

产品验证



Western blot analysis of SRRM1 expressed in Mouse liver, HT-29, OVCAR3 using SRRM1 Rabbit pAb at 1:1000. Secondary antibody: HRP Goat Anti-Rabbit IgG (H+L) at 1:5000. Lysates/proteins: 30ug per lane. Blocking buffer: 5% non-fat dry milk in TBST. Detection: ECL Enhanced Kit. Exposure time: 120s.

实验步骤

访问官网浏览详情: www.ablybio.cn