

# EIF4G1 Rabbit pAb

货号: **AYP16856**

## 产品信息

反应	Human
宿主	Rabbit
克隆性	Polyclonal
预测反应	
应用	WB IHC
推荐浓度	<b>WB:</b> 1:500 - 1:1000 <b>IHC:</b> 1:50 - 1:200
理论分子量	154kDa/158kDa/166kDa/171kDa/175kDa/176kDa
实测分子量	260kDa
形式	Liquid
保存条件	Store at -20°C. Avoid freeze / thaw cycles. Buffer: PBS with 0.02% sodium azide,50% glycerol,pH7.3.
偶联物	Unconjugated
阳性对照	MCF7,U251,BT474,HeLa
细胞定位	cytoplasm,cytoplasmic stress granule,cytosol,eukaryotic translation initiation factor 4F complex,nucleus, postsynapse
纯化	Affinity purification

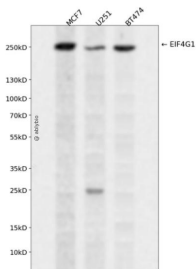
## 抗原信息

抗原信息	A synthetic peptide corresponding to a sequence within amino acids 400-500 of human EIF4G1 (NP_8865 53.3).
序列	PEELLNGAPSPPAVDLSPVSEPEEQAKEVTASMAPPTIPSATPATAPSATSPAQEEEMEEEEEEEEEGEAGEAGEAESEKGGEE ELLPPESTPIPANLSQNLE

## 靶点信息

研究背景	The protein encoded by this gene is a component of the multi-subunit protein complex EIF4F. This complex facilitates the recruitment of mRNA to the ribosome, which is a rate-limiting step during the initiation phase of protein synthesis. The recognition of the mRNA cap and the ATP-dependent unwinding of 5'-terminal secondary structure is catalyzed by factors in this complex. The subunit encoded by this gene is a large scaffolding protein that contains binding sites for other members of the EIF4F complex. A domain at its N-terminus can also interact with the poly(A)-binding protein, which may mediate the circularization of mRNA during translation. Alternative splicing results in multiple transcript variants, some of which are derived from alternative promoter usage.
基因ID	1981
基因名	EIF4G1
Swiss	Q04637
别名	EIF4G1;EIF-4G1;EIF4F;EIF4G;EIF4GI;P220;PARK18

## 产品验证



Western blot analysis of EIF4G1 expressed in MCF7,U251,BT474 using EIF4G1 Rabbit pAb at 1:1000. Secondary antibody: HRP Goat Anti-Rabbit IgG (H+L) at 1:5000. Lysates/proteins: 30ug per lane. Blocking buffer: 5% non-fat dry milk in TBST. Detection: ECL Enhanced Kit. Exposure time: 120s.

## 实验步骤

访问官网浏览详情: [www.ablybio.cn](http://www.ablybio.cn)