

CLCN2 Rabbit pAb

货号: **AYP16852**

产品信息

反应	Human,Mouse
宿主	Rabbit
克隆性	Polyclonal
预测反应	
应用	WB
推荐浓度	WB: 1:500 - 1:2000
理论分子量	14kDa/93kDa/95kDa/96kDa/98kDa
实测分子量	90-98kDa
形式	Liquid
保存条件	Store at -20°C. Avoid freeze / thaw cycles. Buffer: PBS with 0.02% sodium azide,50% glycerol,pH7.3.
偶联物	Unconjugated
阳性对照	Mouse brain,Mouse testis
细胞定位	Cell membrane,Multi-pass membrane protein
纯化	Affinity purification

抗原信息

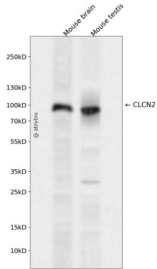
抗原信息	Recombinant fusion protein containing a sequence corresponding to amino acids 550-770 of human CLCN 2 (NP_001164560.1).
序列	PSLYDSIIRIKLPLPELGGWRHQYRVRVEDIMVRDVPHVLSCTFRDLRLALHRTKGRMLALVESPEMILLGSIERSQV VALLGAQLSPARRRQHMQERRATQTSPLSDQEGPPTPEASVCFQVNTEDSAFPAARGETHKPLKPALKRGPSVTRNLGES PTGSAESAGIALRSLFCGSPPEAASEKLESCEKRKLKRVRLASDADLEGEMSPEE

靶点信息

研究背景	This gene encodes a voltage-gated chloride channel. The encoded protein is a transmembrane protein that maintains chloride ion homeostasis in various cells. Defects in this gene may be a cause of certain epilepsies. Four transcript variants encoding different isoforms have been found for this gene.
基因ID	1181

基因名	CLCN2
Swiss	P51788
别名	CLCN2;CIC-2;CLC2;ECA2;ECA3;EG111;EG13;EGMA;EJM6;EJM8;LKPAT;cIC-2

产品验证



Western blot analysis of CLCN2 expressed in Mouse brain, Mouse testis using CLCN2 Rabbit pAb at 1:1000. Secondary antibody: HRP Goat Anti-Rabbit IgG (H+L) at 1:5000. Lysates/proteins: 30ug per lane. Blocking buffer: 5% non-fat dry milk in TBST. Detection: ECL Enhanced Kit. Exposure time: 120s.

实验步骤

访问官网浏览详情: www.ablybio.cn