

ERCC6L Rabbit pAb

货号: **AYP16844**

产品信息

反应	Human
宿主	Rabbit
克隆性	Polyclonal
预测反应	
应用	WB
推荐浓度	WB: 1:500 - 1:2000
理论分子量	141kDa
实测分子量	223kDa
形式	Liquid
保存条件	Store at -20°C. Avoid freeze / thaw cycles. Buffer: PBS with 0.02% sodium azide, 50% glycerol, pH7.3.
偶联物	Unconjugated
阳性对照	293T, Jurkat, A-549
细胞定位	Chromosome, centromere, kinetochore
纯化	Affinity purification

抗原信息

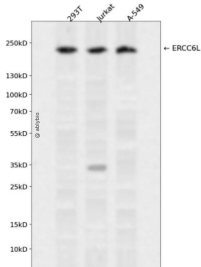
抗原信息	A synthetic peptide corresponding to a sequence within amino acids 300-400 of human ERCC6L (NP_060139.2).
序列	KDATPGEKALGFKISENLMIAIKPYFLRRTKEDVQKKSSNPEARLNEKNPDVDAICEMPSLSRKNDLIWIRLVPLQEEIYRK FVSLDHIKELLMETRSP

靶点信息

研究背景	DNA helicase that acts as a tension sensor that associates with catenated DNA which is stretched under tension until it is resolved during anaphase. Functions as ATP-dependent DNA translocase. Can promote Holliday junction branch migration (in vitro).
基因ID	54821

基因名	ERCC6L
Swiss	Q2NKX8
别名	ERCC6L;PICH;RAD26L

产品验证



Western blot analysis of ERCC6L expressed in 293T, Jurkat, A-549 using ERCC6L Rabbit pAb at 1:1000. Secondary antibody: HRP Goat Anti-Rabbit IgG (H+L) at 1:5000. Lysates/proteins: 30ug per lane. Blocking buffer: 5% non-fat dry milk in TBST. Detection: ECL Enhanced Kit. Exposure time: 120s.

实验步骤

访问官网浏览详情: www.ablybio.cn