

C11orf30 Rabbit pAb

货号: **AYP16843**

产品信息

反应	Human,Mouse
宿主	Rabbit
克隆性	Polyclonal
预测反应	
应用	WB IF/ICC
推荐浓度	WB: 1:500 - 1:1000 IF/ICC: 1:50 - 1:100
理论分子量	9kDa/123kDa/131kDa/141kDa/143kDa
实测分子量	141kDa
形式	Liquid
保存条件	Store at -20°C. Avoid freeze / thaw cycles. Buffer: PBS with 0.02% sodium azide,50% glycerol,pH7.3.
偶联物	Unconjugated
阳性对照	MCF-7
细胞定位	Nucleus
纯化	Affinity purification

抗原信息

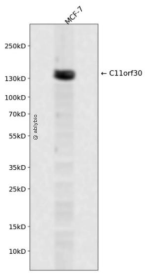
抗原信息	Recombinant fusion protein containing a sequence corresponding to amino acids 1153-1322 of human C11orf30 (NP_064578.2).
序列	SLMEAQIDTNVEHMIVDPPKKALATSMILTGEAGSLPSTHMVVAGMANSTPQQKCRESCSSPSTVGSSSLTTRKIDPPAVP ATGQFMRIQNVGQKKAEESPAEEIIIQAIQYAI PCHSSSNVVVEPSGLLELNNFTSQQLDDEETAMEQDIDSSTEDGTEPSP SQSSAERS

靶点信息

研究背景	Regulator which is able to repress transcription, possibly via its interaction with a multiprotein chromatin remodeling complex that modifies the chromatin. Its interaction with BRCA2 suggests that it may play a central role in the DNA repair function of BRCA2. Mediates ligand-dependent transcriptional activation by nuclear hormone receptors.
------	--

基因ID	56946
基因名	EMSY
Swiss	Q7Z589
别名	EMSY;C11orf30;GL002

产品验证



Western blot analysis of C11orf30 expressed in MCF-7 using C11orf30 Rabbit pAb at 1:1000. Secondary antibody: HRP Goat Anti-Rabbit IgG (H+L) at 1:5000. Lysates/proteins: 30ug per lane. Blocking buffer: 5% non-fat dry milk in TBST. Detection: ECL Enhanced Kit. Exposure time: 120s.

实验步骤

访问官网浏览详情: www.ablybio.cn