

# MLL5 Rabbit pAb

货号: **AYP16840**

## 产品信息

反应	Human,Mouse,Rat
宿主	Rabbit
克隆性	Polyclonal
预测反应	
应用	WB IHC IF/ICC
推荐浓度	<b>WB:</b> 1:500 - 1:1000 <b>IHC:</b> 1:50 - 1:200 <b>IF/ICC:</b> 1:50 - 1:200
理论分子量	68kDa/98kDa/131kDa/180-204kDa
实测分子量	100KDa
形式	Liquid
保存条件	Store at -20°C. Avoid freeze / thaw cycles. Buffer: PBS with 0.01% thiomersal,50% glycerol,pH7.3.
偶联物	Unconjugated
阳性对照	C2C12
细胞定位	Cell membrane,Cytoplasm,Nucleus speckle,Peripheral membrane protein
纯化	Affinity purification

## 抗原信息

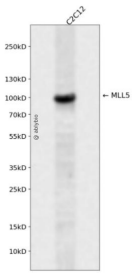
抗原信息	Recombinant fusion protein containing a sequence corresponding to amino acids 1-190 of human MLL5 ( NP_891847.1).
序列	MSIVIPLGVDTAETSYLEMAAGSEPESVEASPVVVEKSNSYPHQLYTSSSHHSYIGLPYADHNYGARPPPTPPASPPPSV LISKNEVGIFTPNFDETSSATTISTSEDGSYGTDVTRCICGFTHDDGYMICCDKCSVWQHIDCMGIDRQHIDTYLCERCQ PRNLDKERAVLLQRRKRENMSDGDTS

## 靶点信息

研究背景	This gene is a member of the myeloid/lymphoid or mixed-lineage leukemia (MLL) family and encodes a protein with an N-terminal PHD zinc finger and a central SET domain. Overexpression of the protein inhibits cell cycle progression. Alternate transcriptional splice variants have been characterized.
------	---

基因ID	55904
基因名	KMT2E
Swiss	Q8IZD2
别名	KMT2E;HDCMC04P;MLL5;NKp44L

## 产品验证



Western blot analysis of MLL5 expressed in C2C12 using MLL5 Rabbit pAb at 1:1000. Secondary antibody: HRP Goat Anti-Rabbit IgG (H+L) at 1:5000. Lysates/proteins: 30ug per lane. Blocking buffer: 5% non-fat dry milk in TBST. Detection: ECL Enhanced Kit. Exposure time: 120s.

## 实验步骤

访问官网浏览详情: [www.ablybio.cn](http://www.ablybio.cn)