

# RNASE1 Rabbit pAb

货号: **AYP16825**

## 产品信息

反应	Mouse
宿主	Rabbit
克隆性	Polyclonal
预测反应	
应用	WB
推荐浓度	<b>WB:</b> 1:500 - 1:2000
理论分子量	17kDa
实测分子量	15kDa
形式	Liquid
保存条件	Store at -20°C. Avoid freeze / thaw cycles. Buffer: PBS with 0.02% sodium azide, 50% glycerol, pH7.3.
偶联物	Unconjugated
阳性对照	Mouse pancreas
细胞定位	Secreted
纯化	Affinity purification

## 抗原信息

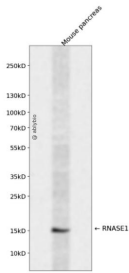
抗原信息	Recombinant fusion protein containing a sequence corresponding to amino acids 29-156 of human RNASE1 (NP_937875.1).
序列	KESRAKKFQRQHMDSDSSPSSSTYCNQMMRRRNMTQGRCKPVNTFVHEPLVDVQNVCFQEKVTCNGQGNCYKSN SSMHITDCRLTNGSRYPNCAYRTSPKERHIIIVACEGSPYVPVHFDASVEDST

## 靶点信息

研究背景	This gene encodes a member of the pancreatic-type of secretory ribonucleases, a subset of the ribonuclease A superfamily. The encoded endonuclease cleaves internal phosphodiester RNA bonds on the 3'-side of pyrimidine bases. It prefers poly(C) as a substrate and hydrolyzes 2',3'-cyclic nucleotides, with a pH optimum near 8.0. The encoded protein is monomeric and more commonly acts to degrade ds-RNA over ss-RNA. Alternative splicing occurs at this locus and four transcript variants encoding the same protein have been identified.
------	---

基因ID	6035
基因名	RNASE1
Swiss	P07998
别名	RNASE1;RAC1;RIB1;RNS1

## 产品验证



Western blot analysis of RNASE1 expressed in Mouse pancreas using RNASE1 Rabbit pAb at 1:1000. Secondary antibody: HRP Goat Anti-Rabbit IgG (H+L) at 1:5000. Lysates/proteins: 30ug per lane. Blocking buffer: 5% non-fat dry milk in TBST. Detection: ECL Enhanced Kit. Exposure time: 120s.

## 实验步骤

访问官网浏览详情: [www.ablybio.cn](http://www.ablybio.cn)