

— ABLYBIO, Help Your Research



# TFPI2 Rabbit pAb

货号: **AYP16821**

## 产品信息

反应	Human,Mouse
宿主	Rabbit
克隆性	Polyclonal
预测反应	
应用	WB IHC
推荐浓度	<b>WB:</b> 1:500 - 1:2000 <b>IHC:</b> 1:50 - 1:200
理论分子量	25kDa/26kDa
实测分子量	25kDa/26kDa
形式	Liquid
保存条件	Store at -20°C. Avoid freeze / thaw cycles. Buffer: PBS with 0.02% sodium azide,50% glycerol,pH7.3.
偶联物	Unconjugated
阳性对照	
细胞定位	Secreted
纯化	Affinity purification

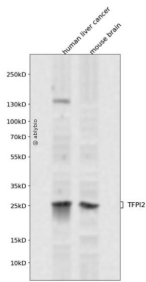
## 抗原信息

抗原信息	Recombinant fusion protein containing a sequence corresponding to amino acids 23-235 of human TFPI2 (NP_006519.1).
------	--

## 靶点信息

研究背景	This gene encodes a member of the Kunitz-type serine proteinase inhibitor family. The protein can inhibit a variety of serine proteases including factor VIIa/tissue factor, factor Xa, plasmin, trypsin, chymotrypsin and plasma kallikrein. This gene has been identified as a tumor suppressor gene in several types of cancer. Alternative splicing results in multiple transcript variants.
基因ID	7980
基因名	TFPI2
Swiss	P48307 ( <a href="https://www.uniprot.org/uniprotkb/P48307/entry">https://www.uniprot.org/uniprotkb/P48307/entry</a> )
别名	TFPI2,PP5,REF1,TFPI-2,TFPI2 Rabbit pAb,Placental protein 5

## 产品验证



Western blot analysis of TFPI2 expressed in human liver cancer, mouse brain using TFPI2 Rabbit pAb at 1:1000. Secondary antibody: HRP Goat Anti-Rabbit IgG (H+L) at 1:5000. Lysates/proteins: 30ug per lane. Blocking buffer: 5% non-fat dry milk in TBST. Detection: ECL Enhanced Kit. Exposure time: 120s.

## 实验步骤

访问官网浏览详情: [www.ablybio.cn](http://www.ablybio.cn) (<https://www.ablybio.cn/www.ablybio.cn>)