

GIP Rabbit pAb

货号: **AYP16818**

产品信息

反应	Human,Mouse,Rat
宿主	Rabbit
克隆性	Polyclonal
预测反应	
应用	WB IHC
推荐浓度	WB: 1:100 - 1:500 IHC: 1:50 - 1:200
理论分子量	17kDa
实测分子量	17KDa
形式	Liquid
保存条件	Store at -20°C. Avoid freeze / thaw cycles. Buffer: PBS with 0.05% proclin300,50% glycerol,pH7.3.
偶联物	Unconjugated
阳性对照	Mouse small intestine
细胞定位	Secreted
纯化	Affinity purification

抗原信息

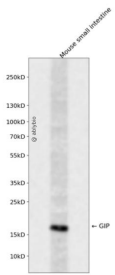
抗原信息	Recombinant fusion protein containing a sequence corresponding to amino acids 22-153 of human GIP (NP_004114.1).
序列	EKKEGHFSALPSLPVGS hakVSSPQPRGPRYAEGTFISDYSIAMDKIHQQDFVNWLLAQKGGKNDWKHNITQREARALEL ASQANRKEEEAVEPQSSPAKNPSDEDLLRDL LIQELLACLLDQTNLCRLRSR

靶点信息

研究背景	This gene encodes an incretin hormone and belongs to the glucagon superfamily. The encoded protein is important in maintaining glucose homeostasis as it is a potent stimulator of insulin secretion from pancreatic beta-cells following food ingestion and nutrient absorption. This gene stimulates insulin secretion via its G protein-coupled receptor activation of adenylyl cyclase and other signal transduction pathways. It is a relatively poor inhibitor of gastric acid secretion.
------	-------------------------------------------------------------------------------------------------------------------------------------------------------------------------------------------------------------------------------------------------------------------------------------------------------------------------------------------------------------------------------------------------------------------------------------------------------------------------------------------------

基因ID	2695
基因名	GIP
Swiss	P09681
别名	GIP

产品验证



Western blot analysis of GIP expressed in Mouse small intestine using GIP Rabbit pAb at 1:1000. Secondary antibody: HRP Goat Anti-Rabbit IgG (H+L) at 1:5000. Lysates/proteins: 30ug per lane. Blocking buffer: 5 % non-fat dry milk in TBST. Detection: ECL Enhanced Kit. Exposure time: 120s.

实验步骤

访问官网浏览详情: www.ablybio.cn