

ESD Rabbit pAb

货号: **AYP16816**

产品信息

反应	Human,Mouse
宿主	Rabbit
克隆性	Polyclonal
预测反应	
应用	WB IHC
推荐浓度	WB: 1:500 - 1:2000 IHC: 1:50 - 1:200
理论分子量	31kDa
实测分子量	36kDa
形式	Liquid
保存条件	Store at -20°C. Avoid freeze / thaw cycles. Buffer: PBS with 0.02% sodium azide,50% glycerol,pH7.3.
偶联物	Unconjugated
阳性对照	MCF7,Jurkat,HepG2,293T,Mouse kidney
细胞定位	Cytoplasm,Cytoplasmic vesicle
纯化	Affinity purification

抗原信息

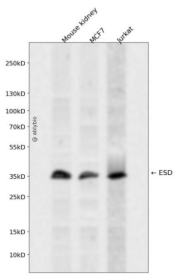
抗原信息	Recombinant fusion protein containing a sequence corresponding to amino acids 1-282 of human ESD (NP_001975.1).
序列	MALKQISSNKCFGGLQKVFHDSVELNCKMKFAVYLPPKAETGKCPALYWLSGLTCTEQNFISKSGYHQSAEHGLVVIAPDTSPRGCNIKGEDESWDFGTGAGFYVDATEDPWKTNYRMYSYVTEELPQLINANFPVDPQRMSIFGHSMGGHGALICALKNPGKYKSVSAFAPICNPVLCPWGKKAFFSGYLGTDQSKWKAYDATHLVKSYPGSQLDILIDQGKDDQFLLDGQLLPDNFIAACTEKKIPVVFRLQEGYDHSYFIATFITDHIRHHAAYLNA

靶点信息

研究背景	This gene encodes a serine hydrolase that belongs to the esterase D family. The encoded enzyme is active toward numerous substrates including O-acetylated sialic acids, and it may be involved in the recycling of sialic acids. This gene is used as a genetic marker for retinoblastoma and Wilson's disease.
------	--

基因ID	2098
基因名	ESD
Swiss	P10768
别名	ESD;FGH

产品验证



Western blot analysis of ESD expressed in Mouse kidney, MCF7, Jurkat using ESD Rabbit pAb at 1:1000. Secondary antibody: HRP Goat Anti-Rabbit IgG (H+L) at 1:5000. Lysates/proteins: 30ug per lane. Blocking buffer: 5% non-fat dry milk in TBST. Detection: ECL Enhanced Kit. Exposure time: 120s.

实验步骤

访问官网浏览详情: www.ablybio.cn