

LALBA Rabbit pAb

货号: **AYP16815**

产品信息

反应	Mouse,Rat
宿主	Rabbit
克隆性	Polyclonal
预测反应	
应用	WB IHC
推荐浓度	WB: 1:500 - 1:2000 IHC: 1:50 - 1:200
理论分子量	16kDa
实测分子量	33kDa
形式	Liquid
保存条件	Store at -20°C. Avoid freeze / thaw cycles. Buffer: PBS with 0.02% sodium azide,50% glycerol,pH7.3.
偶联物	Unconjugated
阳性对照	Rat heart
细胞定位	Secreted
纯化	Affinity purification

抗原信息

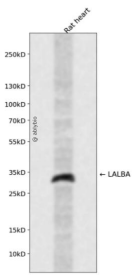
抗原信息	Recombinant fusion protein containing a sequence corresponding to amino acids 20-142 of human LALBA (NP_002280.1).
序列	KQFTKCELSQLLKDIDGYGGIALPELICMTMFHTSGYDTQAIVENNESTEYGLFQISNKLWCKSSQVPQSRNICDISCDKFLD DDITDDIMCAKKILDIKGIDYWLAHKALCTEKLQWLCEKL

靶点信息

研究背景	This gene encodes alpha-lactalbumin, a principal protein of milk. Alpha-lactalbumin forms the regulatory subunit of the lactose synthase (LS) heterodimer and beta 1,4-galactosyltransferase (beta4Gal-T1) forms the catalytic component. Together, these proteins enable LS to produce lactose by transferring galactose moieties to glucose. As a monomer, alpha-lactalbumin strongly binds calcium and zinc ions and may possess bactericidal or antitumor activity. A folding variant of alpha-lactalbumin, called HAMLET, likely induce apoptosis in tumor and immature cells.
------	---

基因ID	3906
基因名	LALBA
Swiss	P00709
别名	LALBA;LYZG

产品验证



Western blot analysis of LALBA expressed in Rat heart using LALBA Rabbit pAb at 1:1000. Secondary antibody: HRP Goat Anti-Rabbit IgG (H+L) at 1:5000. Lysates/proteins: 30ug per lane. Blocking buffer: 5% non-fat dry milk in TBST. Detection: ECL Enhanced Kit. Exposure time: 120s.

实验步骤

访问官网浏览详情: www.ablybio.cn