

SERPINB1 Rabbit pAb

货号: **AYP16804**

产品信息

反应	Human,Mouse,Rat
宿主	Rabbit
克隆性	Polyclonal
预测反应	
应用	WB IHC IF/ICC
推荐浓度	WB: 1:500 - 1:1000 IHC: 1:50 - 1:200 IF/ICC: 1:50 - 1:200
理论分子量	26kDa/42kDa
实测分子量	45KDa
形式	Liquid
保存条件	Store at -20°C. Avoid freeze / thaw cycles. Buffer: PBS with 0.05% proclin300,50% glycerol,pH7.3.
偶联物	Unconjugated
阳性对照	HeLa,A-549,K-562,Mouse lung,Rat lung,Rat spleen
细胞定位	Cytoplasm,Cytoplasmic granule
纯化	Affinity purification

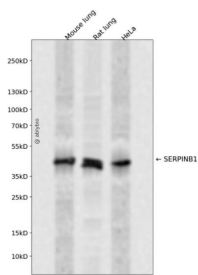
抗原信息

抗原信息	Recombinant fusion protein containing a sequence corresponding to amino acids 100-379 of human SERP INB1 (NP_109591.1).
序列	FLPEFLVSTQKTYGADLASVDFQHASEDARKTINQVWVGQTEGKIPPELLASGMVDNMTKLVLVNAIFYKGNWKDKFMKE ATTNAPFRLNKKDRKTVKMMYQKKKFAYGYIEDLKCRVLELPYQGEELSMVILLPDDIEDESTGLKKIEEQLTLEKLHEWTKP ENLDFIEVNVSLPRFKLEESYTLNSDLARLGVQDLFNSSKADLSGMSGARDIFISKIVHKSFVEVNEEGTEAAAATAGIATFC MLMPEENFTADHPFLFFIRHNSSGSILFLGRFSSP

靶点信息

研究背景	The protein encoded by this gene is a member of the serpin family of proteinase inhibitors. Members of this family maintain homeostasis by neutralizing overexpressed proteinase activity through their function as suicide substrates. This protein inhibits the neutrophil-derived proteinases neutrophil elastase, cathepsin G, and proteinase-3 and thus protects tissues from damage at inflammatory sites. Alternative splicing results in multiple transcript variants.
基因ID	1992
基因名	SERPINB1
Swiss	P30740
别名	SERPINB1;EI;ELANH2;HEL-S-27;HEL57;LEI;M/NEI;MNEI;PI-2;PI2

产品验证



Western blot analysis of SERPINB1 expressed in Mouse lung, Rat lung, HeLa using SERPINB1 Rabbit pAb at 1:1000. Secondary antibody: HRP Goat Anti-Rabbit IgG (H+L) at 1:5000. Lysates/proteins: 30ug per lane. Blocking buffer: 5% non-fat dry milk in TBST. Detection: ECL Enhanced Kit. Exposure time: 120s.

实验步骤

访问官网浏览详情: www.ablybio.cn