

KCNA2 Rabbit pAb

货号: AYP16796

产品信息

反应	Human,Mouse
宿主	Rabbit
克隆性	Polyclonal
预测反应	
应用	WB IF/ICC
推荐浓度	WB: 1:500 - 1:2000 IF/ICC: 1:50 - 1:100
理论分子量	40kDa/56kDa
实测分子量	60kDa
形式	Liquid
保存条件	Store at -20°C. Avoid freeze / thaw cycles. Buffer: PBS with 0.02% sodium azide,50% glycerol,pH7.3.
偶联物	Unconjugated
阳性对照	Mouse plasma
细胞定位	Cell junction,Cell membrane,Cell projection,Endoplasmic reticulum membrane,Membrane,Multi-pass membrane protein,axon,dendrite,lamellipodium membrane,presynaptic cell membrane,synapse,synaptosome
纯化	Affinity purification

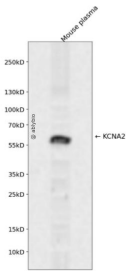
抗原信息

抗原信息	Recombinant fusion protein containing a sequence corresponding to amino acids 1-165 of human KCNA2 (NP_001191198.1).
序列	MTVATGDPADAAAALPGHPQDQTYDPEADHECCERVVINISGLRFETQLKTLAQFPETLLGDPKRMRYFDPLRNEYFFDRN RPSFDAILYYYQSGGRLRRPVNVPLDIFSEEIRFYELGEEAMEMFREDEGYIKEEERPLPENEFQRQVWLLFEYPSSGPARII

靶点信息

研究背景	Potassium channels represent the most complex class of voltage-gated ion channels from both functional and structural standpoints. Their diverse functions include regulating neurotransmitter release, heart rate, insulin secretion, neuronal excitability, epithelial electrolyte transport, smooth muscle contraction, and cell volume. Four sequence-related potassium channel genes - shaker, shaw, shab, and shal - have been identified in Drosophila, and each has been shown to have human homolog(s). This gene encodes a member of the potassium channel, voltage-gated, shaker-related subfamily. This member contains six membrane-spanning domains with a shaker-type repeat in the fourth segment. It belongs to the delayed rectifier class, members of which allow nerve cells to efficiently repolarize following an action potential. The coding region of this gene is intronless, and the gene is clustered with genes KCNA3 and KCNA10 on chromosome 1.
基因ID	3737
基因名	KCNA2
Swiss	P16389
别名	KCNA2;EIEE32;HBK5;HK4;HUKIV;KV1.2;MK2;NGK1;RBK2

产品验证



Western blot analysis of KCNA2 expressed in Mouse plasma using KCNA2 Rabbit pAb at 1:1000. Secondary antibody: HRP Goat Anti-Rabbit IgG (H+L) at 1:5000. Lysates/proteins: 30ug per lane. Blocking buffer: 5% non-fat dry milk in TBST. Detection: ECL Enhanced Kit. Exposure time: 120s.

实验步骤

访问官网浏览详情: www.ablybio.cn